



Bubbly Dendrodris (*Dendrodris gunnamatta*) observation uploaded to iNaturalist Australia by Peter, June 2020 (CC-BY-NC)

## Message from Andre Zerger, Director, Atlas of Living Australia (ALA)

Dear Atlas of Living Australia community,

Welcome to this very full winter edition of our ALA newsletter. We lead off this issue with the release of the ALA Strategy 2020-2025, explore CSIRO and ALA-led citizen science work in response to the summer bushfires, showcase three contemporary ALA-enabled Australian research publications and provide a number of our community updates to ongoing projects.

[Read more](#)

## Atlas of Living Australia Strategy 2020-2025

Drawing on 10 years of experience as Australia's biodiversity data infrastructure and incorporating insights from our national and international partners, the ALA Strategy 2020-25 details our priorities to continue to support world-class research and decision-making.

[Read more](#)



## Highlights

### Citizen science and bushfire recovery

In collaboration with CSIRO and the Australian Citizen Science Association we launched the Citizen Science Bushfire Project Finder to support Australia's bushfire recovery.

[Read more](#)



### iNaturalist Australia

Australia participated in the iNaturalist City Nature Challenge for the first time in 2020, and iNaturalist Australia reached 1 million observations.

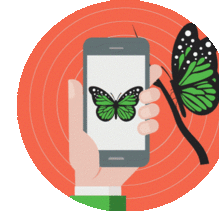
[Read more](#)



### Backyard checklist competition

For the chance to win a microscope kit, put your naturalist cap on and discover what species are hiding in your own backyard.

[Read more](#)



## ALA science impact



[Climate change impacts on Australia's eucalypt and coral species](#)



[High sampling effectiveness for non-bee flower visitors using vane traps in both open and wooded habitats](#)



[Climate-driven shifts in the distribution of koala-browse species from the Last Interglacial to the near future](#)

## Technical updates

### Data Quality Project update

The ALA Data Quality project team is working towards releasing its first piece of software. But there's still time to help us test and provide feedback.

[Read more](#)



## Tips & tricks

### Making sense of the spatially valid flag

When searching occurrence records in the ALA, you can apply a filter to show if the records pass basic tests for their spatial data components.

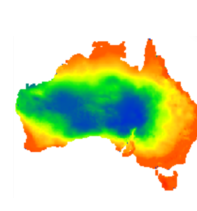
[Read more](#)



### Refreshing our Spatial Portal layers

We're starting a review of our environmental and contextual layers to improve user experience and system performance.

[Read more](#)



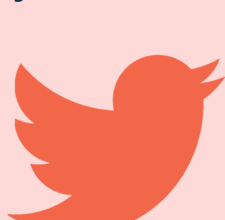
## Recent observations

Every day new images of Australia's amazingly diverse species are added to the Atlas of Living Australia (ALA) by many different data providers.

This beautiful image of a [Pincushion Hakea \(\*Hakea laurina\*\)](#) was taken in the Stirling Range National Park and uploaded by Chris Morse. Image license: CC-BY-NC.



## Handy links & resources



**Twitter**  
Follow us on twitter for regular news and updates.



**Spatial Portal**  
Analyse species, location and environment data.



**Search ALA**  
Search species, datasets, and more.



The Atlas of Living Australia is made possible by contributions from its many partners. It receives support through the Australian Government's National Collaborative Research Infrastructure Strategy (NCRIS) and is hosted by CSIRO.



Atlas of Living Australia | [www.ala.org.au](http://www.ala.org.au) | [support@ala.org.au](mailto:support@ala.org.au)

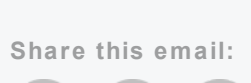
The Atlas of Living Australia acknowledges Australia's Traditional Owners and pays respect to the past and present Elders of the nation's Aboriginal and Torres Strait Islander communities. We honour and celebrate the spiritual, cultural and customary connections of Traditional Owners to country and the biodiversity that forms part of that country.

If you do not want to receive this newsletter, please opt out using the link below.



This content is licensed under a [Creative Commons Attribution 3.0 Australia License](#).

Share this email:



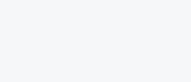
[Manage](#) your preferences | [Opt out](#) using TrueRemove™

Got this as a forward? [Sign up](#) to receive our future emails.

View this email [online](#).

GPO Box 1700  
Canberra, | 2601 AU

This email was sent to .  
To continue receiving our emails, add us to your address book.



[Subscribe](#) to our email list.