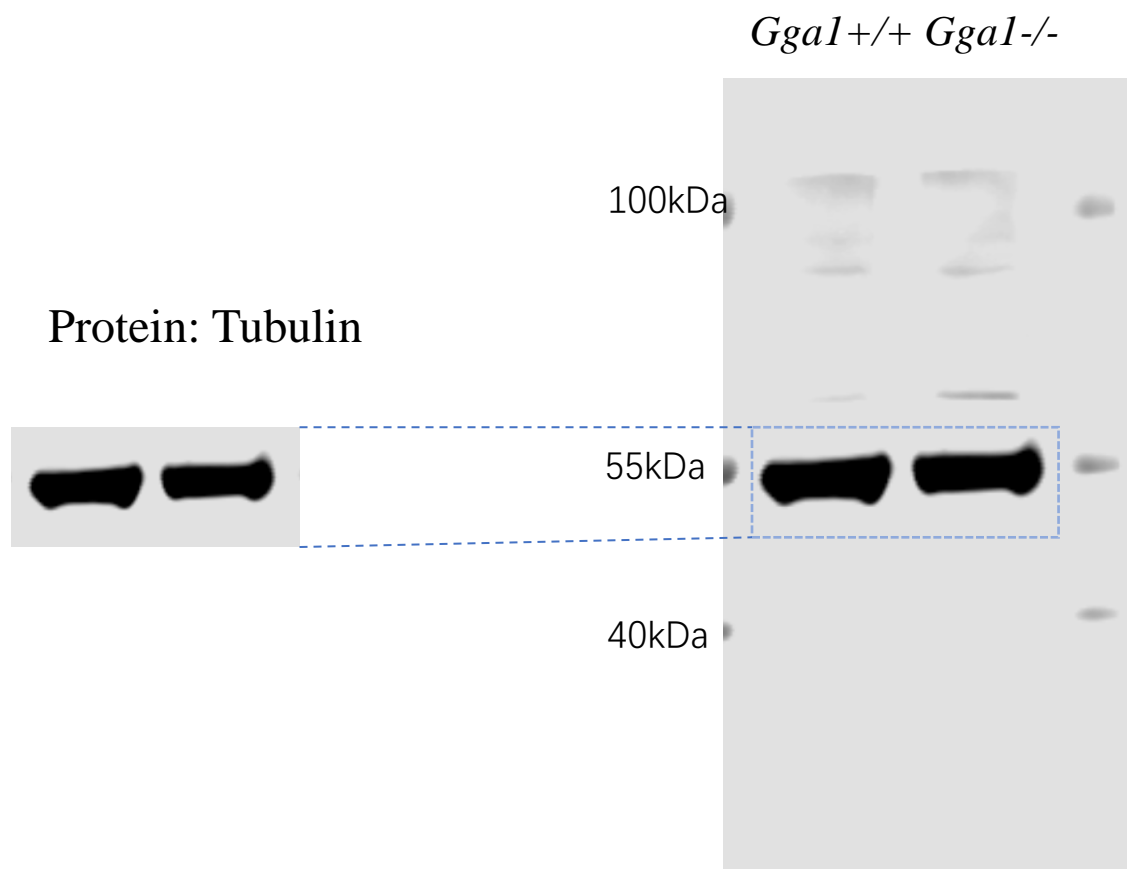
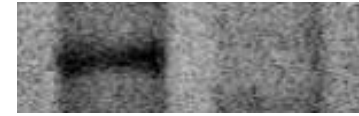


Figure1B: Genotyping of *Ggal*^{+/+}, *Ggal*^{+/-} and *Ggal*^{-/-} mice.



Protein: GGA1



130kDa

100kDa

55kDa

40kDa

Ggal^{+/+} *Ggal*^{-/-}

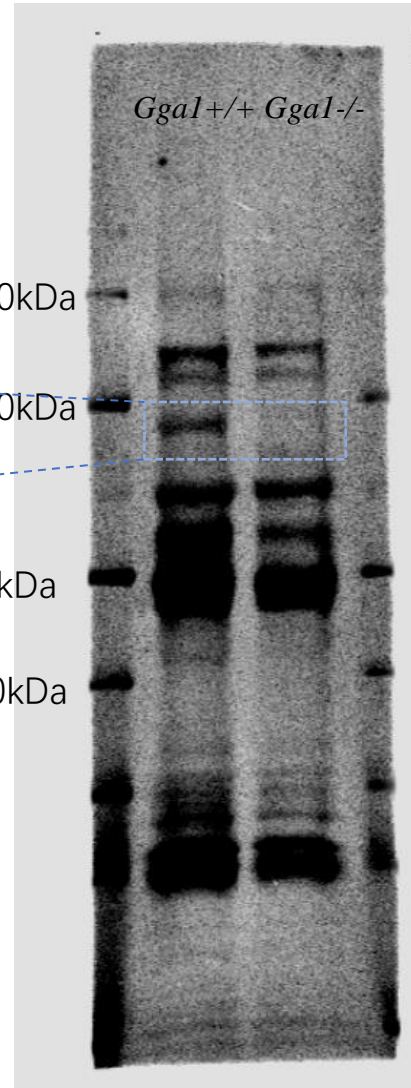
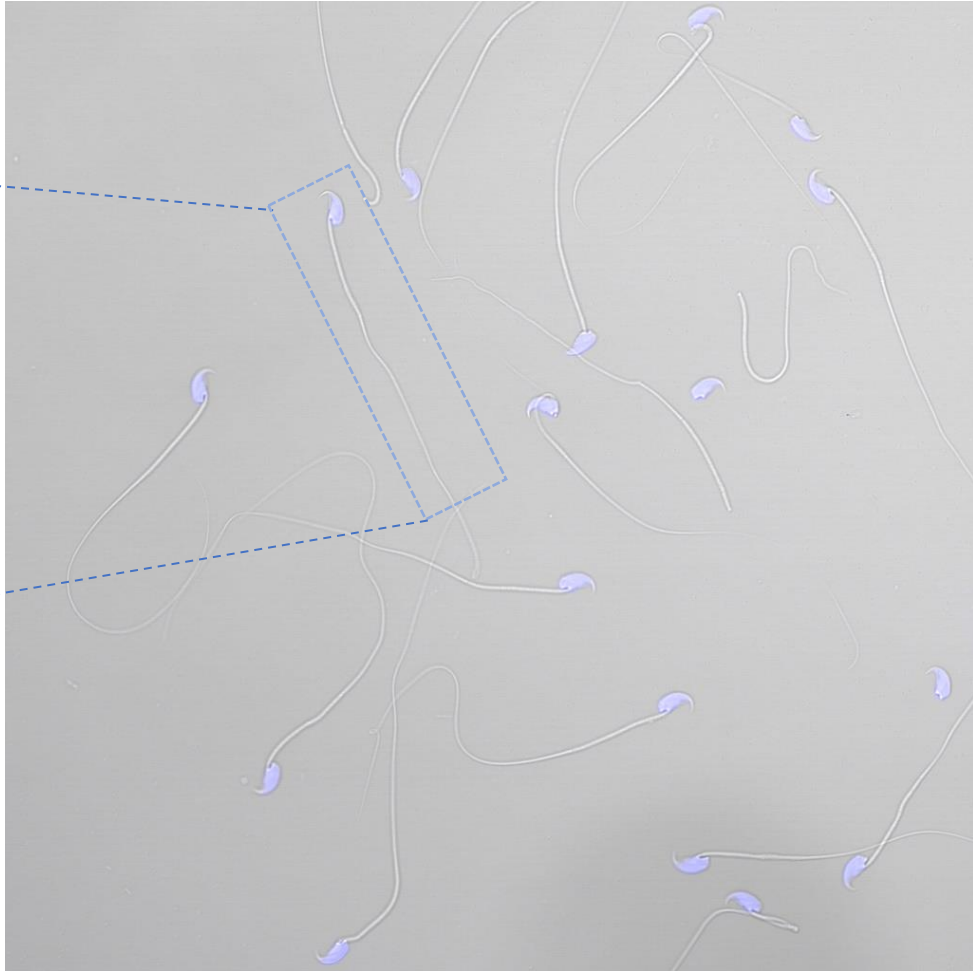


Figure1C: The GGA1 protein was completely absent in the testis of *Ggal*^{-/-} mice. Immunoblotting of GGA1 was performed in *Ggal*^{+/+} and *Ggal*^{-/-} testis. TUBULIN served as a loading control..

Ggal^{+/+}



Ggal^{-/-}

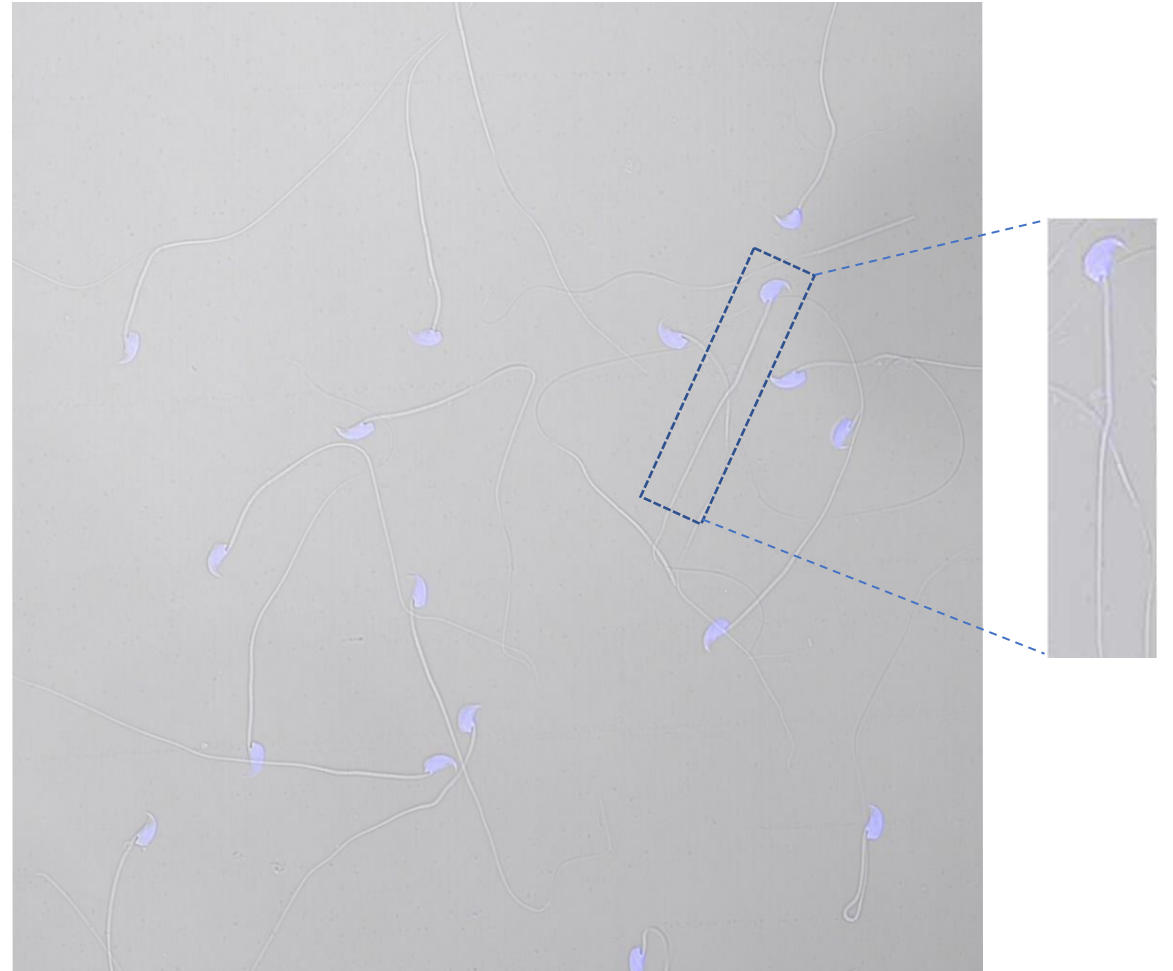


Figure1J: Immunofluorescence staining of DAPI in *Ggal*^{+/+} and *Ggal*^{-/-} spermatozoa.

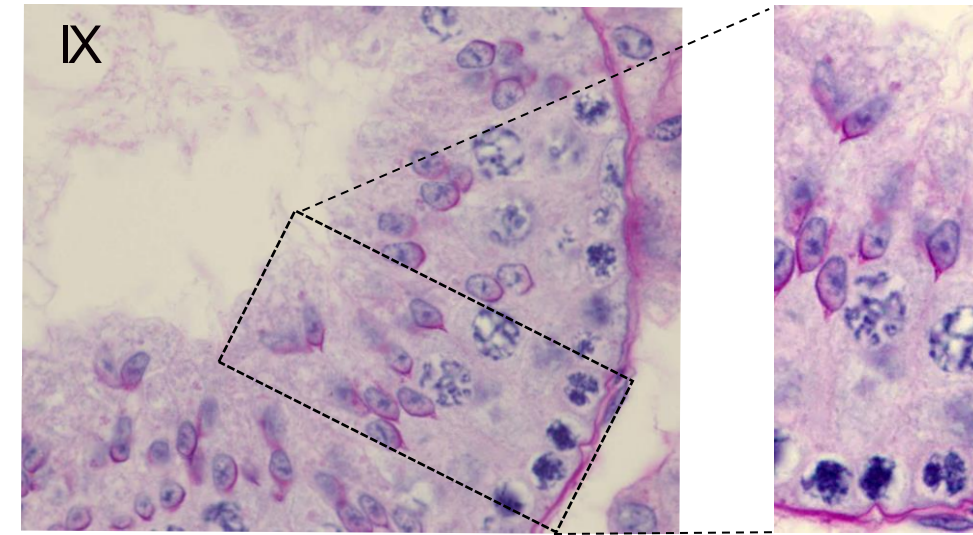
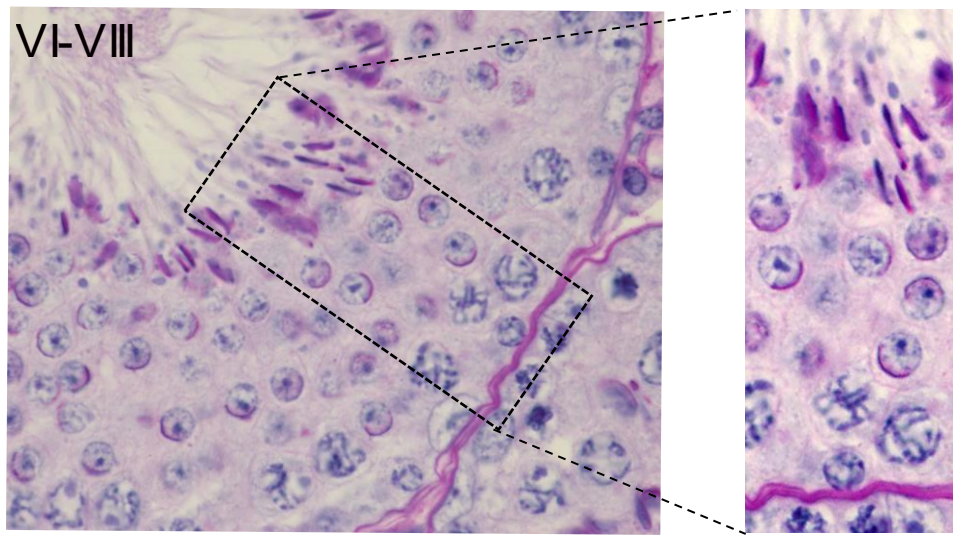
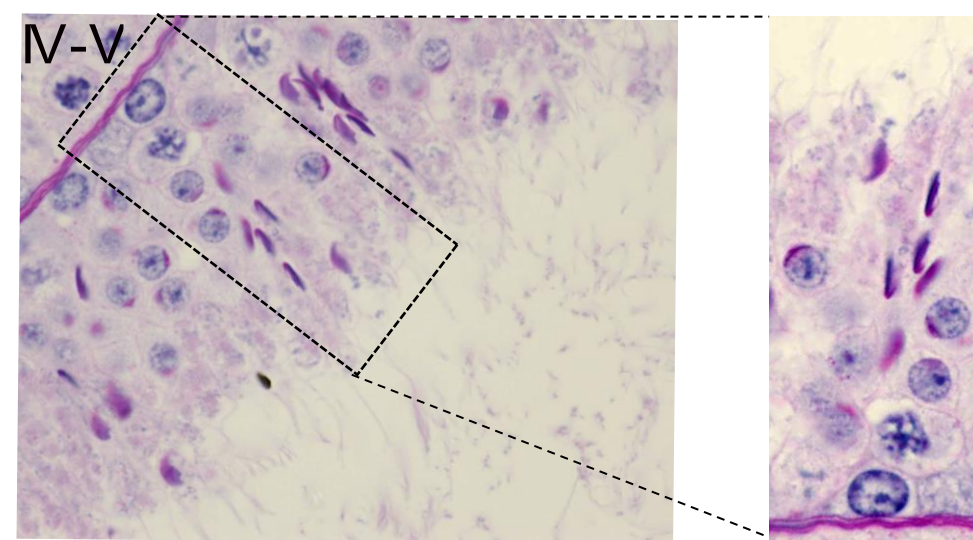
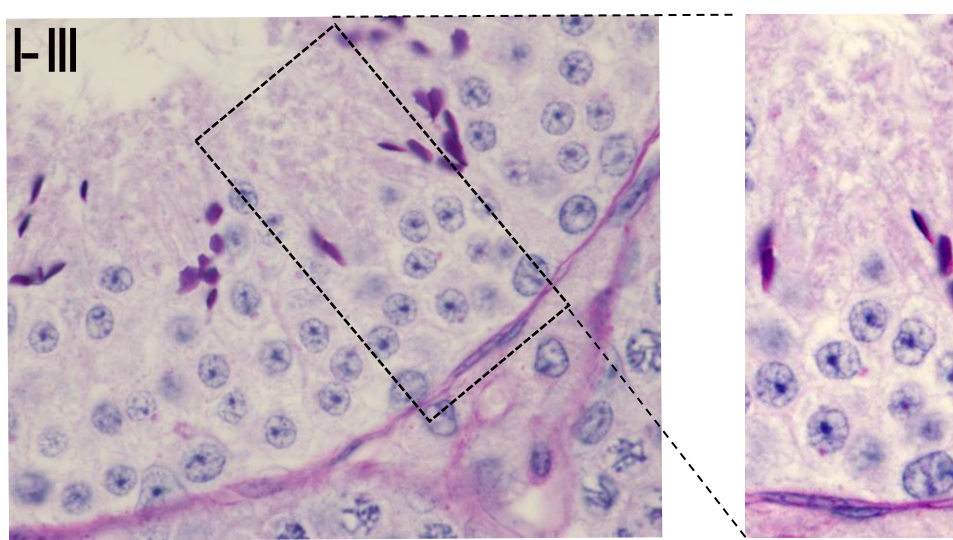


Figure4B: Paraffin sections of seminiferous tubules from BPA-treated *Ggal*^{+/+} males were stained with PAS-hematoxylin.

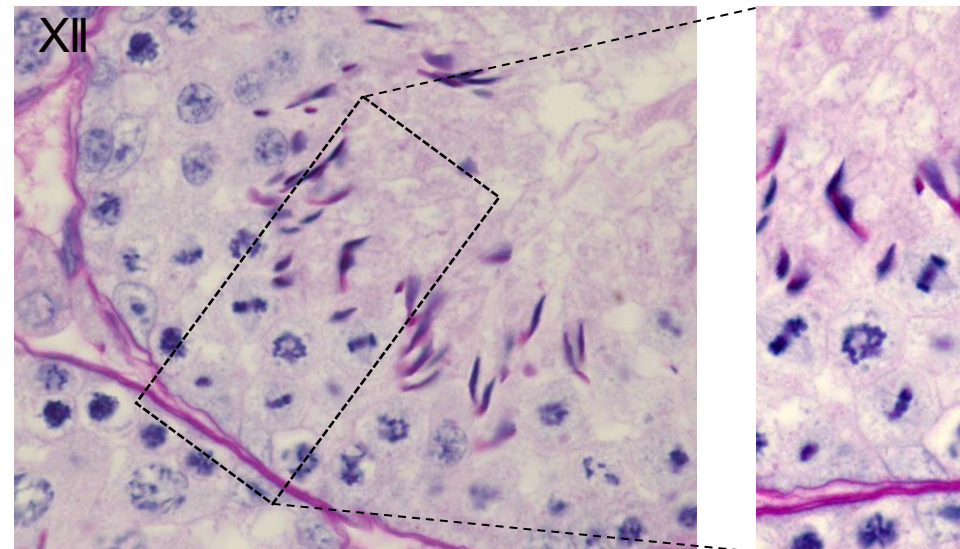
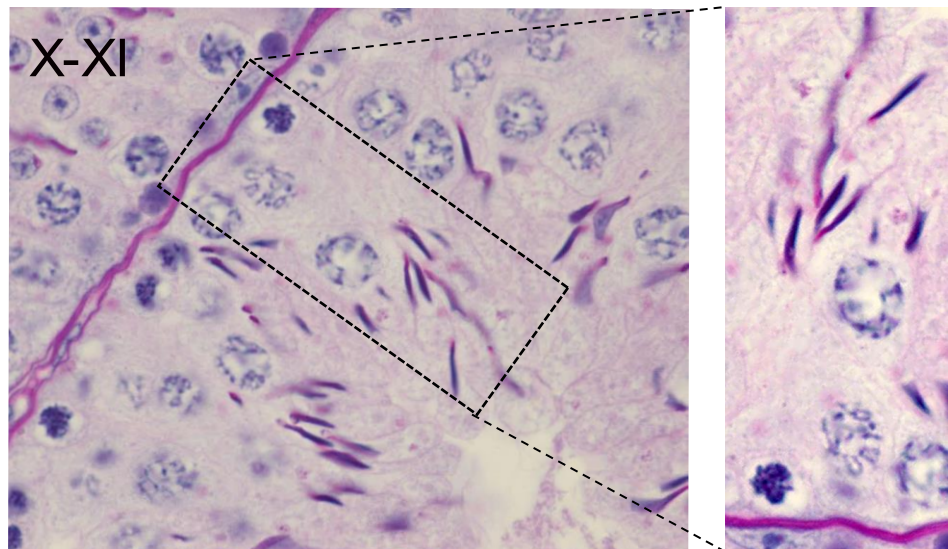


Figure4B: Paraffin sections of seminiferous tubules from BPA-treated *Ggal*^{+/+} males were stained with PAS-hematoxylin.

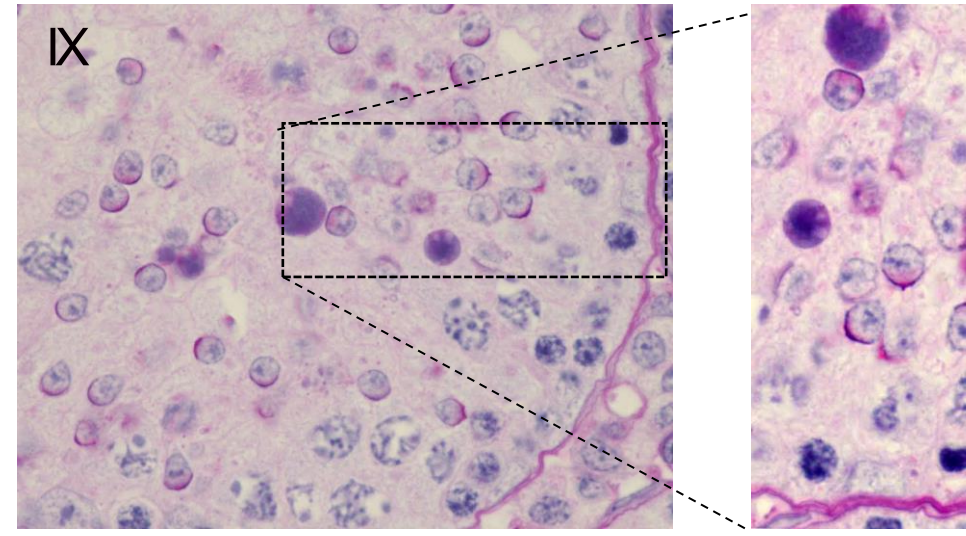
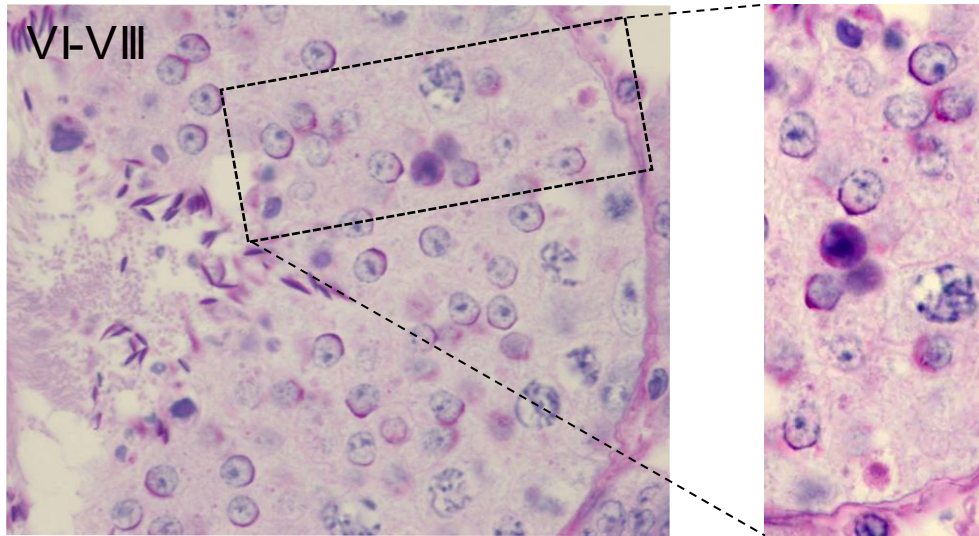
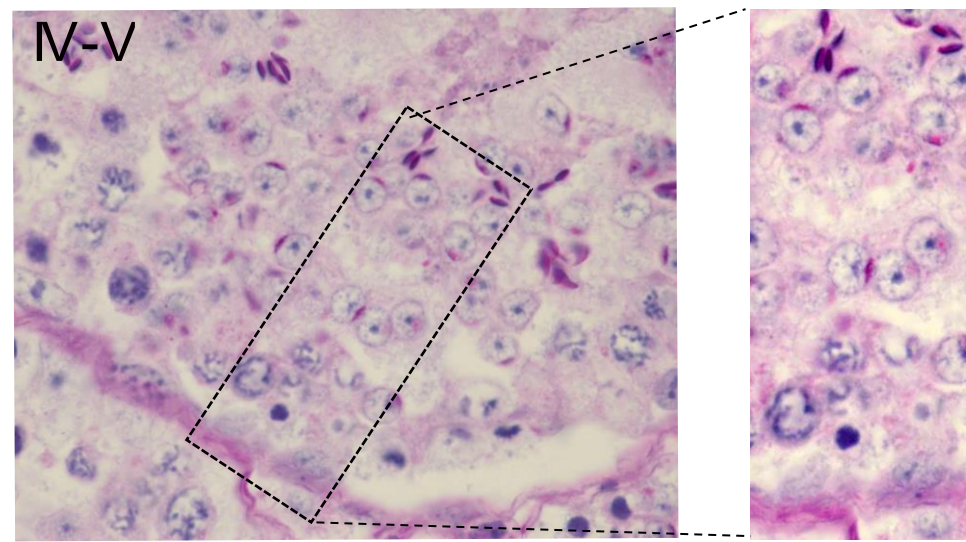
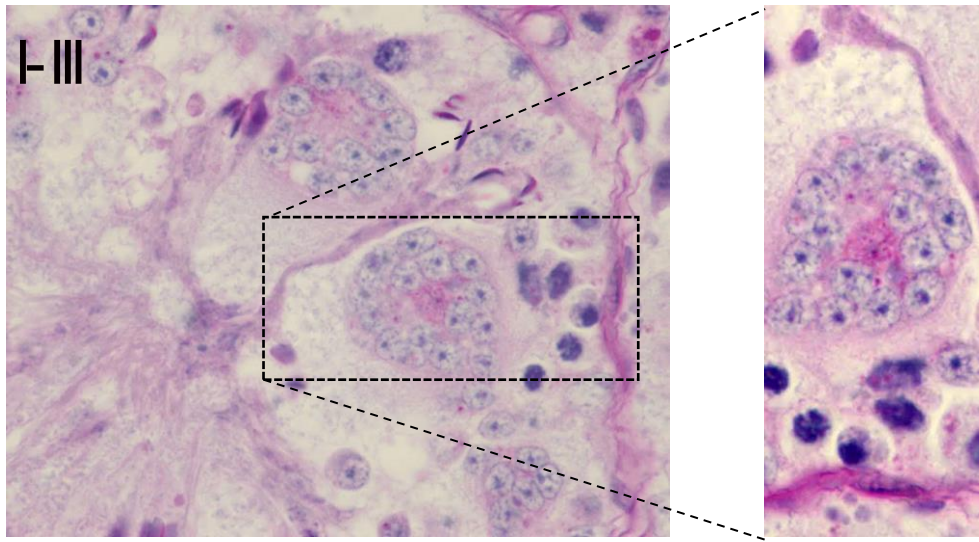


Figure4B: Paraffin sections of seminiferous tubules from BPA-treated *Ggal*^{-/-} males were stained with PAS-hematoxylin.

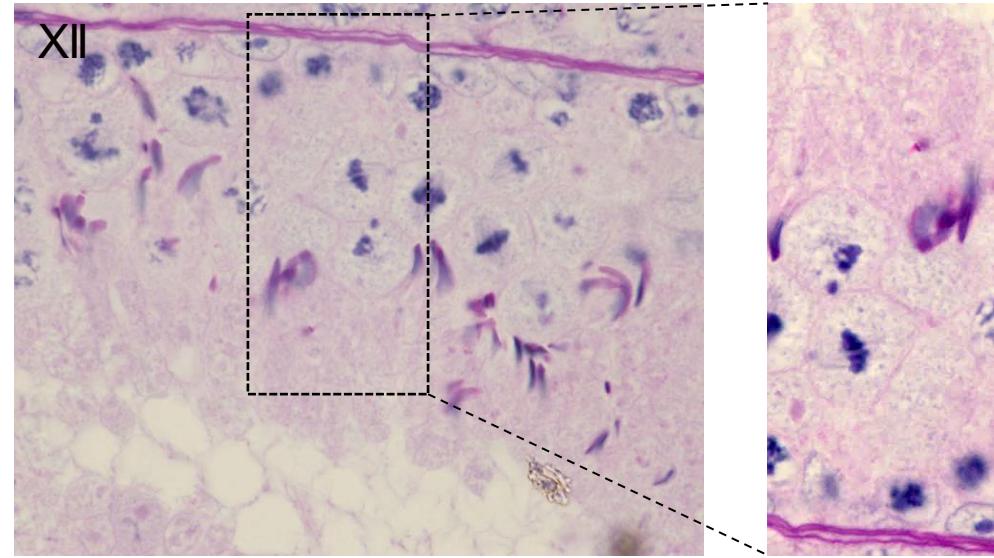
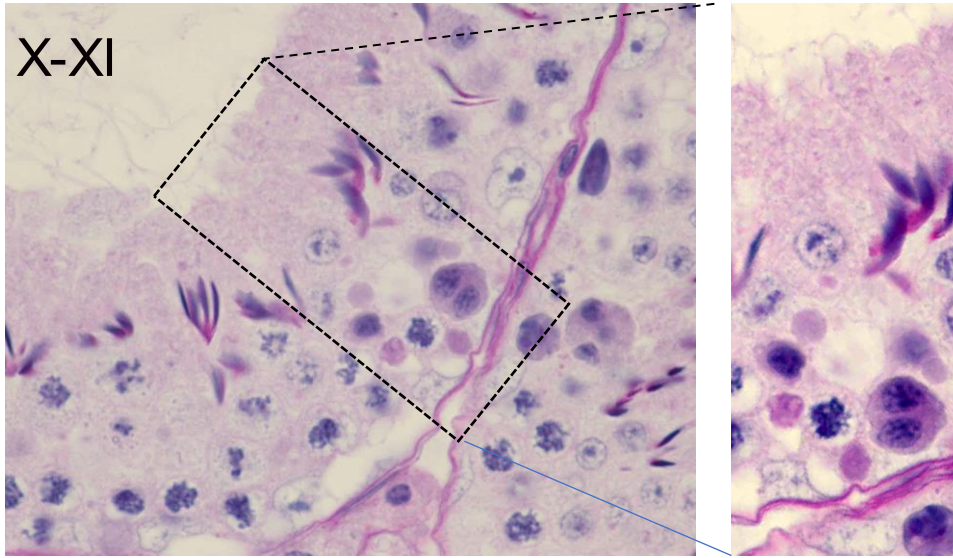


Figure4B: Paraffin sections of seminiferous tubules from BPA-treated *Ggal*^{-/-} males were stained with PAS-hematoxylin.