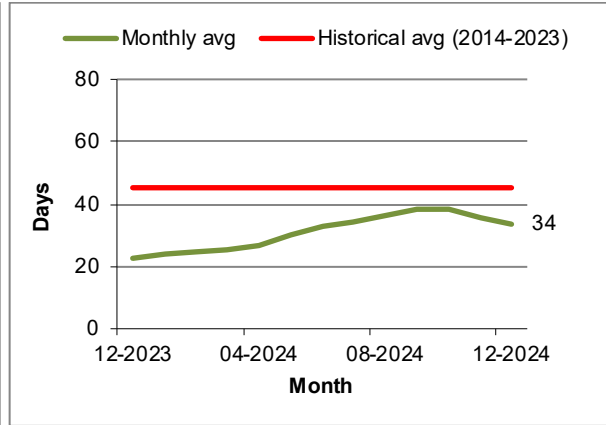
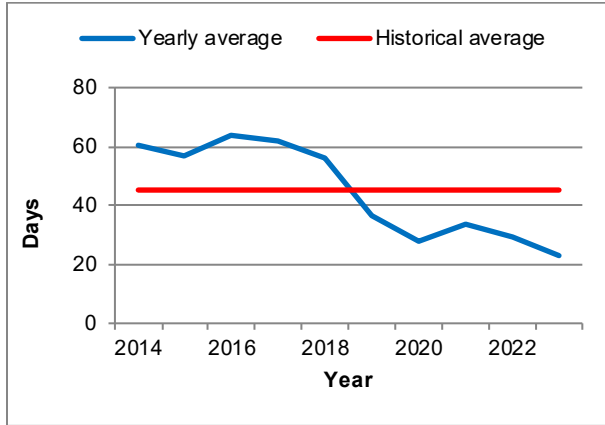


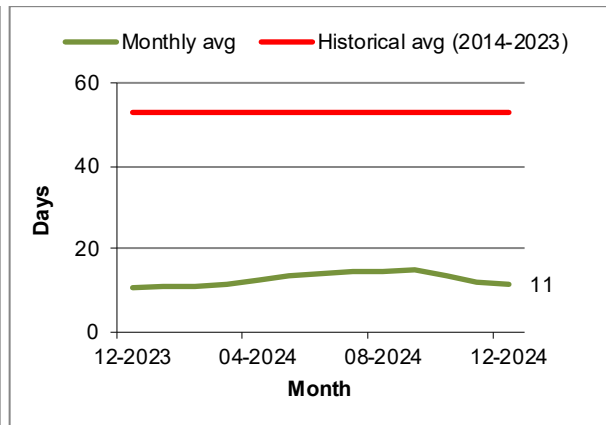
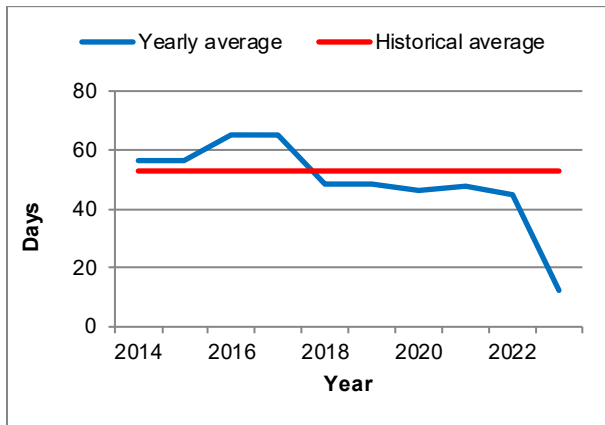
Madrid System Pendency Rates

Key Figures as of 31 December 2024

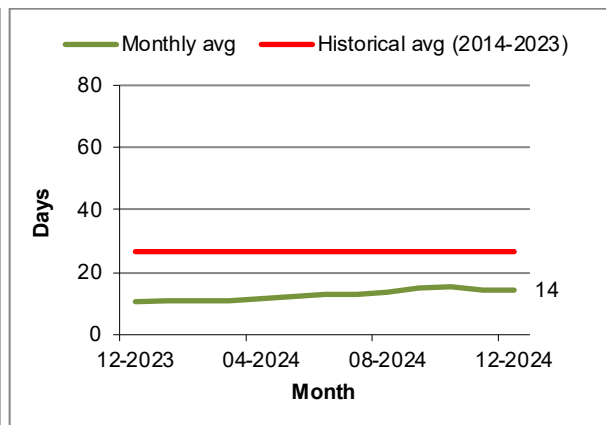
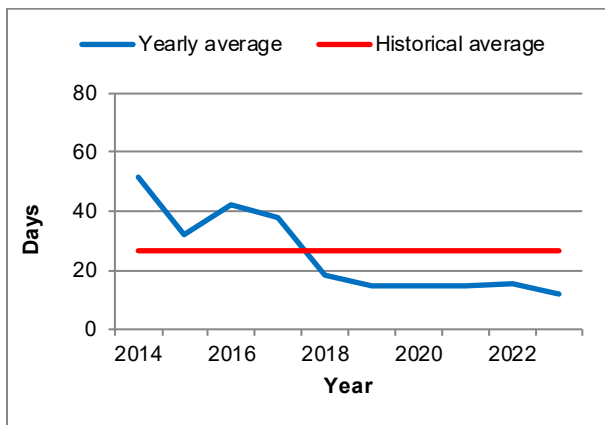
International Applications



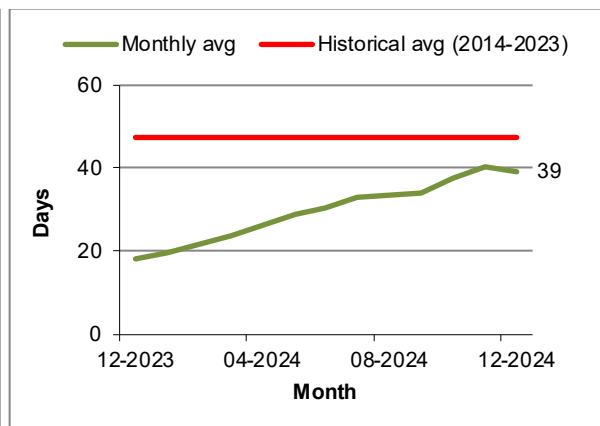
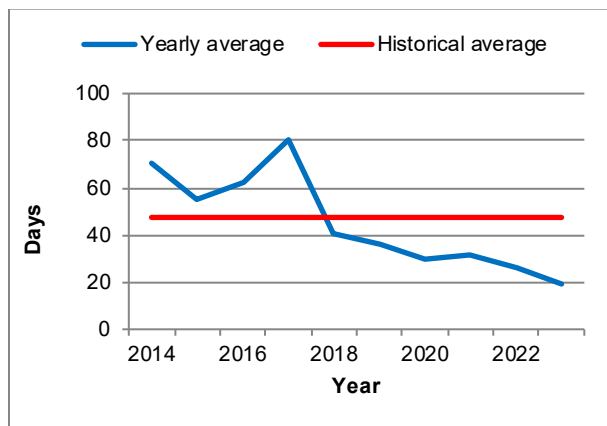
Renewals



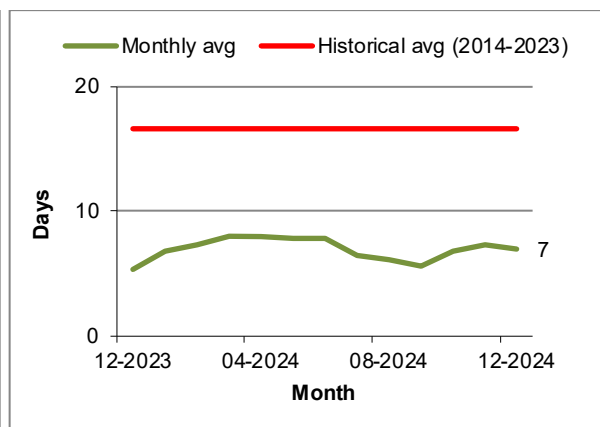
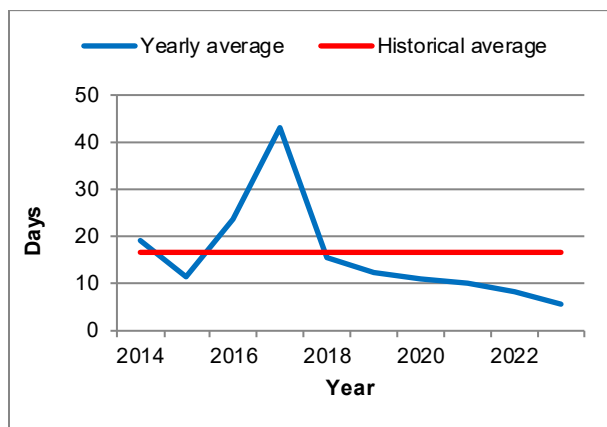
Subsequent designations



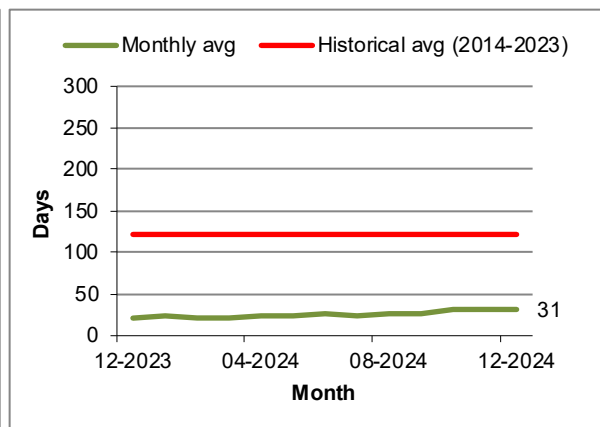
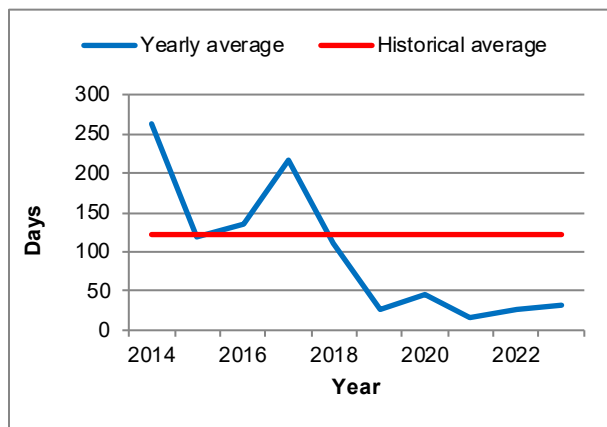
Modifications



Decisions



Corrections



Notes:

- The pendency rates are for transactions with no irregularities.
- The pendency is calculated from the date a document is received at WIPO to the date it is inscribed in the International Register.
- Monthly average is the monthly rolling average during the preceding six-month period.
- The days represented on the vertical axis are calendar days.