

MANAGEMENT EFFECTIVENESS EVALUATION(MEE) OF TIGER RESERVES IN INDIA



TECHNICAL MANUAL

2022
EDITION





Citation: Yadav, S.P., Mallick, A., Garawad, R., Sultan, S. and Singh, H. (eds) 2022 . Technical Manual, Management Effectiveness Evaluation (MEE) of Tiger Reserves in India. National Tiger Conservation Authority, Government of India, New Delhi.

Photo Courtesy:-

Front Cover: Sanjay Shukla

Back Cover : Cheshta Singh

Compilation & Design: Paridhi Jain

FOREWORD

The globally accepted framework of Management Effectiveness Evaluation (MEE) of tiger reserves has paved way for successfully assessing the tiger conservation efforts in the country. The MEE criteria for assessing the management effectiveness has been adopted from the IUCNs World Commission on Protected Areas framework.

Initiated in 2006, repeat cycles of evaluation of Tiger Reserves Network have been made every four years. This process is the most significant approach for conservation of tigers and management of associated landscape connectivity. The 4th round of independent assessment was conducted in 2018 for 50 Tiger Reserves.

A committee has been constituted by the National Tiger Conservation Authority to review the MEE criteria. The committee has revisited the criteria for the 5th cycle of MEE exercise to bring about parity in the analysis of diverse tiger reserves of the country and to guide the evaluators with respect to the assessments to be made in the coming financial year. Based on the suggestions made by the committee, the criteria in the technical manual have been refined. The intention of the exercise was to bring about certain supportive changes which shall enable better assessment of managerial parameters.

I congratulate the team for their efforts and exhort them to continue safeguarding tigers and their habitat.

Dr. S P Yadav

Additional Director General, Project Tiger &

Member Secretary, National Tiger Conservation Authority

TABLE OF CONTENTS

1. Introduction.....	1
2. Management Effectiveness.....	1
3. What is a Management Effectiveness Assessment?.....	2
4. The WCPA Framework for Assessing Management Effectiveness.....	2
5. Assessment Process.....	4
6. Assessment Criteria.....	4
7. MEE Score Card.....	27
8. References.....	27

Annexure

ANNEXURE-I: Landscape Clusters for Independent Management Effectiveness Evaluation of Tiger Reserves.....	28
---	----



1. Introduction

Protected Areas (PAs) face many challenges to their integrity which, unless addressed can undermine the very objectives for which they were established. Those responsible for the conservation and management of PAs have the complex task of anticipating and dealing with these challenges, most often in an environment of limited financial and organizational capacity. It is therefore important that we invest in the efforts in the most critical areas to ensure that available resources are applied to their maximum effectiveness.

2. Management Effectiveness

In recent years there has been a growing concern amongst protected area professionals and the public that many protected areas are failing to achieve their objectives and, in some cases, are actually losing the values for which they were established (Hockings et al 2008). As a result, improving the effectiveness of protected area management has become a priority throughout the conservation community. One important step in this process is the carrying out of an assessment of current status and management of the protected area, to understand better what is and what is not working, and to plan any necessary changes as efficiently as possible. Assessment of management effectiveness has emerged as a key tool for protected area managers and is increasingly being required by governments and international bodies. For example, the Convention on Biological Diversity (CBD) Programme of Work for Protected Areas (agreed in February 2004) calls on all State Parties to implement management effectiveness assessments for at least 30% of their protected areas by 2010.

In response to these initiatives, work on management effectiveness assessment has become an increasingly common component of protected area management worldwide. India has also made a beginning in evaluating the management effectiveness of its national parks, wildlife sanctuaries and tiger reserves (Mathur, 2008). The Project Tiger had conducted the management effectiveness assessment of 28 tiger reserves in 2006 (http://projecttiger.nic.in/Report-2_EvaluationReportsofTRinIndia.pdf) and the results of this assessment were peer- reviewed by the IUCN (http://projecttiger.nic.in/Report-1_ReviewofTRAssessmentReport.pdf). In 2010-2011, the National Tiger Conservation Authority (NTCA) with technical backstopping of the Wildlife Institute of India carried out an independent evaluation of all 39 tiger reserves in the country (Mathur et al, 2011, http://www.wii.gov.in/tiger_reports). In 2014-15, NTCA and WII conducted MEE of 43 tiger reserves (http://www.wii.gov.in/release_mee_tiger_report_2014). The MoEFCC and WII have also conducted MEE of 125 National Parks and Wildlife Sanctuaries in the country (http://www.wii.gov.in/release_of_mee_report). Evaluations have now been undertaken in over 6,000 protected areas and the pace of this work is accelerating (Fiona Leverington et al, 2008). International organizations working with protected areas such as IUCN and its World Commission on Protected Areas (WCPA), the World Bank, the Global Environment Facility as

well as NGOs such as WWF and The Nature Conservancy have taken a lead in both promoting the importance of management effectiveness as an issue, and in providing the technical development and support needed to underpin this effort.

Assessments should not primarily be about reporting on or judging either their managers and/or the frontline staff. As important as reporting requirements are, the assessment of management effectiveness should primarily be used to assist managers to work as effectively as possible.

Monitoring threats and activities affecting a PA and using the results to manage for challenges, threats and pressures is increasingly seen as being at the core of good PA management. Assessments help managers and stakeholders reflect on their experience, allocate resources efficiently, and plan for effective management in relation to potential threats and opportunities.

3. What is a Management Effectiveness Assessment?

Protected area management effectiveness evaluation is defined as the assessment of how well protected areas are being managed – primarily, whether they are protecting their values and achieving agreed goals and objectives. The term ‘management effectiveness’ reflects three main themes of protected area management:

- Design issues relating to both individual sites and protected area systems;
- Adequacy and appropriateness of management systems and processes;
- Delivery of protected area objectives including conservation of values.

The precise methodology used to assess effectiveness differs between protected areas, and depends on factors such as the time and resources available, the importance of the site, data quality and stakeholder pressures. The differing situations and needs for protected areas thus require different methods of assessment. As a result, a number of assessment tools have been developed to guide and record changes in management practices.

A uniform theme to these assessments has been provided by the IUCN World Commission on Protected Areas (WCPA) Framework for Assessing the Management Effectiveness of Protected Areas (see Figure 1 for more information), which aims both to give overall guidance in the development of assessment systems and to encourage basic standards for assessment and reporting.

4. The WCPA Framework for Assessing Management Effectiveness

The WCPA Framework sees management as a process or cycle with six distinct stages, or elements:

- it begins with establishing the context of existing values and threats
- progresses through planning
- allocation of resources (inputs)
- as a result of management actions (process)
- eventually produces goods and services (outputs)
- that result in impacts or outcomes.

Of these elements, the outcomes most clearly indicate whether the site is maintaining its core values, but outcomes can also be the most difficult element to measure accurately. However, the other elements of the framework are all also important for helping to identify particular areas where management might need to be adapted or improved.



Figure 1: The WCPA Framework for assessing Management Effectiveness

Note: For more information on the WCPA framework see: Hockings, M., Stolton, S., Leverington, F., Dudley, N. and Courrau, J. 2006. Evaluating Effectiveness: A framework for assessing management of protected areas, (2nd edn) World Commission on Protected Areas, IUCN, Gland, Switzerland. The framework can be downloaded from: <http://www.iucn.org/themes/wcpa/pubs/guidelines.htm#effect2>

5. Assessment Process

All 50 Tiger Reserves (TRs) have been grouped in 5 landscape clusters and will be covered under the MEE process (**Annexure-I**). In order to ensure credibility of the assessment process, 5 Independent Expert MEE Committees have been constituted. A Wildlife Institute of India (WII) team will provide the technical backstopping to the MEE process. Considering the growing importance of addressing issues relating to Climate Change, Carbon Capture, preventing Carbon Loss and encouraging further Carbon Capture in Tiger Reserves two additional criteria have been developed. These criteria will not be included in the formal MEE of TRs but the information gathered will help to sensitize the conservation community about the significance of these issues and to plan next steps for addressing them.

The Independent Expert MEE teams will visit all 50 TRs for conducting MEE as per the prescribed assessment criteria and complete the MEE Score Card. All efforts will be made to ensure that the 3 member Independent Expert MEE teams visit the tiger reserves together. At the end of the site visit, an interaction will be organized with Site Managers and his representatives to discuss the findings of the evaluation and to seek additional information/ clarifications. The Site Manager may also make a written submission to the team. The Chairman of the respective committees will send the report through email to the Wildlife Institute of India with a copy to the NCTA, once the MEE of a TR in the assigned cluster has been completed. In addition to the site reports the Chairman will also send a 2-page report on each site covering – (a) Management Strengths; (b) Management Weaknesses; and (c) Immediate Actionable Points.

The logistics for the MEE team visits will be handled by NTCA and the respective Field Directors of the Tiger Reserves. Once the site visits have been completed and the results have been compiled, a meeting of the Evaluation Teams, Site Managers and WII representatives will be organized to share the findings of the evaluation.

6. Assessment Criteria

For assessment of each of the six elements of the MEE Framework, 31 criteria have been developed for MEE of tiger Reserves in India. Explanatory notes for 'Criteria', wherever needed, have been provided to guide the assessment process. Against each 'Criteria' the evaluation team should indicate 'Reference document(s)' and also provide 'Remarks', as appropriate. The scores by themselves will not help in providing the complete picture unless supported by considered observations (remarks) that qualify such scores. This is very important for the NTCA, the field managers concerned, the future of the tiger and associated species, the local people and ecosystems. The Independent MEE Team will also submit a two page note on each site in their cluster describing (a) Strengths; (b) Weaknesses; and (c) Immediate Actionable Points.

Outcomes from the on-going M-Stripes implementation in tiger reserves will be taken into account appropriately and in cases where these available in order to have more objectivity in the MEE process. The issue of assigning 'differential weightages' to some of the headline indicators including 'normalization' would also be examined by the WII-NTCA-MEE team.



PC: Hemant Singh

1. CONTEXT

1.1 Are the values of the TR well documented, assessed and monitored?

Assessment Criteria

Condition	Category*	(Tick ✓)	Reference document(s)	Remarks
Values not systematically documented, assessed and monitored.	Poor			
Values generally identified but not systematically assessed and monitored.	Fair			
Most values systematically identified, assessed and monitored.	Good			
All values systematically identified, assessed and monitored.	Very good			

+This assessment will take into account biological, ecological, economical and socio-culture-spiritual values of the TR in respect of their identification, documentation, assessment and monitoring.

*Score: Poor: 2.5; Fair: 5; Good: 7.5; Very Good: 10

1.2 Are the threats to TR values well documented and assessed*?

Assessment Criteria

Condition	Category*	(Tick ✓)	Reference document(s)	Remarks
Threats not systematically documented or assessed.	Poor			
Threats generally identified but not systematically assessed.	Fair			
Most threats systematically identified and assessed.	Good			
All threats systematically identified and assessed.	Very good			

+This assessment should be based on the number, nature and extent of all threats as per standard protocols (similar to Security Audit Protocols followed by GTF in recent assessment of Tiger Reserves) and their documentation. Threats will include:- current threats (immediate threat to the valuable asset of the TR ,e.g., poaching, habitat destruction, fire, grazing, illicit felling, mining, encroachment, etc.), Near future threats (possible threats in the next 2-3 years, e.g. ,a road coming up in the park) and Future threats (possible threats in next 4-5 years, e.g., industrial growth, and hotspots of fire identified, mapped).

***Score: Poor: 2.5; Fair: 5; Good: 7.5; Very Good: 10**

1.3 Is the ‘Core Area’ of TR free from human and biotic interference?

Assessment Criteria

Condition	Category*	(Tick ✓)	Reference document(s)	Remarks
The ‘Core Area’ has extensive human and biotic interference.	Poor			
The ‘Core Area’ has some human and biotic interference.	Fair			
The ‘Core Area’ has little human and biotic interference.	Good			
The ‘Core Area’ has no human and biotic interference.	Very good			

+This assessment should be based on existence and the efforts made by TR management to address issues related to human settlements/ villages inside the core area; livestock grazing, cultivation, encroachments etc, resource extraction/ livelihood dependence of local communities and should reflect the overall interference due to all the above factors. The issue of ‘Unified Control’ of the ‘Core’ and ‘Buffer’ zones under the Field Director would also be taken into account.

***Score: Poor: 2.5; Fair: 5; Good: 7.5; Very Good: 10**



1.4 Has the TR complied with the four Statutory+ Requirements (SR) along with Tripartite MoU and three Standard Operation Procedures (SOP)?

Assessment Criteria

Condition	Category*	(Tick ✓)	Reference document(s)	Remarks
None of the four SR, no compliance of Tripartite MoU and three SOPs met	Poor			
Two of the four SR, 50% conditions of the Tripartite MoU and SOPs complied	Fair			
Three of the four SR, 75% conditions of the Tri-partite MoU and SOPs complied	Good			
All four SR, 100% conditions of the Tripartite MoU and SOPs complied	Very good			

+Statutory requirements are (1) Legal delineation and notification of Core and Buffer Areas; (2) Establishment of Tiger Conservation Foundation; (3) Development of a Tiger Conservation Plan; and (4) Constitution of a State-level Steering Committee under the Chairmanship of the Chief Minister. TPA refers agreement between Field Director, State Government and NTCA. The 3 SOPs are on (i) Straying of Tiger in human dominated landscape, (ii) Tiger Mortality and (iii) Disposal of Carcasses

*Score: Poor: 2.5; Fair: 5; Good: 7.5; Very Good: 10

1.5 Has the Action Points of Previous MEE been Addressed Substantially?

Assessment Criteria

Condition	Category*	(Tick ✓)	Reference document(s)	Remarks
None of the action points of previous MEE addressed substantially	Poor			
Few of the action points of previous MEE addressed substantially	Fair			
Many action points of previous MEE addressed substantially	Good			
All action points of previous MEE addressed substantially	Very good			

In case of new tiger reserves or wherein earlier MEE recommendations are absent any other report/document may be taken into account which is suggestive in nature, such as recommendations of a committee or any assessment in the area.

*Score: Poor: 2.5; Fair: 5; Good: 7.5; Very Good: 10

2. PLANNING

2.1 Status of Tiger Conservation Plan (TCP)+?

Assessment Criteria

Condition	Category*	(Tick ✓)	Reference document(s)	Remarks
No TCP in place.	Poor			
TCP is under preparation.	Fair			
TR has a relevant TCP.	Good			
TR has a comprehensive and relevant TCP, duly approved by the NTCA.	Very good			

+The scientific content and the participatory processes used in preparation of the TCP will be taken into account in assessing the quality of TCP. Is the TCP comprehensively addressing the managerial requirements of the components viz. core, buffer, corridor, eco-tourism and security.

*Score: Poor: 2.5; Fair: 5; Good: 7.5; Very Good: 10

2.2 Does the TR safeguards the threatened biodiversity values?

Assessment Criteria

Condition	Category*	(Tick ✓)	Reference document(s)	Remarks
TR does not safeguard the threatened biodiversity values.	Poor			
TR safeguards a few threatened biodiversity values.	Fair			
TR safeguards a large number of threatened biodiversity values.	Good			
TR safeguards all threatened biodiversity values.	Very good			

+Remarks need to elaborate on the kind of safeguards and how they work or are intended to work; efforts taken to identify and protect unique biodiversity.

*Score: Poor: 2.5; Fair: 5; Good: 7.5; Very Good: 10

2.3 Are stakeholders given an opportunity to participate in planning process?

Assessment Criteria

Condition	Category*	(Tick ✓)	Reference document(s)	Remarks
Little, if any opportunity for stakeholder participation in planning.	Poor			
Stakeholders participate in some planning.	Fair			
Stakeholders participate in most planning processes.	Good			
Stakeholders routinely and systematically participate in all planning processes.	Very good			

+The assessment should be based on identification of stakeholders to be associated with different planning processes and the opportunity offered to them. The result of participation must show in the field and not merely reported as a routine exercise (Functioning of LAC, micro planning of villages, working of EDC, etc. to be taken into account).

*Score: Poor: 2.5; Fair: 5; Good: 7.5; Very Good: 10

2.4 Are habitat management programmes systematically planned, relevant and monitored, and contribute effectively to Tiger and other endangered species conservation?

Assessment Criteria

Condition	Category*	(Tick ✓)	Reference document(s)	Remarks
Habitat management programmes are entirely adhoc.	Poor			
Limited planning and monitoring programmes are in place for habitat management.	Fair			
Habitat management programmes are generally planned and monitored.	Good			
Habitat management programmes are thoroughly planned and monitored.	Very good			

+This assessment should be primarily based on habitat management programmes in relation to habitats for species that are threatened (IUCN categories), are habitat specific, subjected to seasonal movements, wide ranging with emphasis on the breeding and rearing habitat and may include factors such as food, water, shelter (all connotations).Habitat structure, composition, unique patches of vegetation and sensitive sites, sources of water and their distribution are integral. Corridors within buffer zone are critically important. For example, all riparian habitats, management of Avian faunal diversity, grasslands identified/mapped and being managed scientifically etc. Have these been addressed? Is there a planning process in place? The management practices dealing with invasive species such as Lantana, Michania etc. would be examined. Are the wetlands identified/mapped, management prescriptions in place aquatic flora and fauna inventorised, distribution of waterholes planned/mapped, refilling system in place? Water conservation measures (viz. check dams/anicuts) adopted.

***Score: Poor: 2.5; Fair: 5; Good: 7.5; Very Good: 10**

2.5 Does the TR has an effective Protection Strategy (PS)* and Security Plan and Security Audit (SA) in place?

Assessment Criteria

Condition	Category*	(Tick ✓)	Reference document(s)	Remarks
TR has little or no PS and SA.	Poor			
TR has an adhoc PS and SA.	Fair			
TR has a generally relevant PS and SA but is not very effective.	Good			
TR has a comprehensive and very effective PS and SA.	Very good			

+This assessment takes inter-alia into account the nature of threats, the number and location of patrolling camps and foot and mobile patrolling, needs that relate to available manpower, terrain difficulties, practicability of area coverage, readiness to contain specific threats with necessary support and facilities. The constitution and functioning of Special Tiger Protection Force (STPF) (if constituted), Number of offences reported, arrests made, prosecution initiated and conviction achieved will be taken into account.

***Score: Poor: 2.5; Fair: 5; Good: 7.5; Very Good: 10**



Forest Frontline Force in Kaziranga Tiger Reserve, Assam

2.6 Has the TR been effective in the mitigation of human-wildlife conflicts?

Assessment Criteria

Condition	Category*	(Tick ✓)	Reference document(s)	Remarks
Human-wildlife conflicts are significant but poorly addressed.	Poor			
TR has been able to mitigate few human- wildlife conflicts.	Fair			
TR has been able to mitigate many human- wildlife conflicts.	Good			
TR has been effective in mitigating all human-wildlife conflicts.	Very good			

+The assessment will take into account the number of incidences reported and payment of compensation made and its timelines. Hotspots identified, readiness/ preparedness to effectively manage Human Wildlife interactions (availability of rescue vehicles, cages as per standards, rescue and rehabilitation center etc.) Other aspects to factor in are is the staff adequately trained and well equipped to handle emergency responses. What is the adherence to SOPs/ Protocols, flying squads, Rapid Response Team, response time to a crisis? (Is the rescue team enough in number to cover areas of the park).

*Score: Poor: 2.5; Fair: 5; Good: 7.5; Very Good: 10

2.7 Is the TR integrated into a wider ecological network/ landscape following the principles of the ecosystem approach?

Assessment Criteria

Condition	Category*	(Tick ✓)	Reference document(s)	Remarks
TR not integrated into a wider network/ landscape.	Poor			
Some limited attempts to integrate the TR into a network/ landscape.	Fair			
TR is generally quite well integrated into a network/ landscape.	Good			
TR is fully integrated into a wider network/ landscape.	Very good			

+Assessment needs to consider the scope of opportunities on the landscape scale that exist. Consider whether any attempts have been made and what are these? Have all the important corridors been identified? What actions are planned/implemented for their security? Have the Forest Working Plans and Forest Development Corporation Plans within the identified landscapes taken cognizance of such new requirement? These should have been reflected in TCPs. Is there any effort to rationalize landuse around TR? Is any effort being made to plan and use ‘Smart Green Infrastructure’?

***Score: Poor: 2.5; Fair: 5; Good: 7.5; Very Good: 10**

2.8 Is the TR being consciously managed to prevent carbon loss and to encourage further carbon capture/ climate change mitigation?

Assessment Criteria

Condition	Category*	(Tick✓)	Reference document(s)	Remarks
There have been no efforts to consider carbon storage, carbon capture and adaptation to climate change in management of the TR.	Poor			
Some initial thought has taken place about carbon storage, carbon capture and likely impacts of climate change, but this has yet to be translated into management plans.	Fair			
Detailed plans have been drawn up to reduce carbon loss from TR, to increase carbon dioxide capture and about how to adapt management to predicted climate change, but these have yet to be translated into active management.	Good			
Detailed plans have been drawn up to reduce carbon loss from TR, to increase carbon dioxide capture and about how to adapt management to predicted climate change, and these are already being implemented	Very good			

+To ensure climate change mitigation, parameters that act as carbon sinks viz. wetlands identified/mapped, management prescriptions in place, aquatic flora and fauna inventorised, distribution of waterholes planned/mapped, refilling system in place to be considered. Are water conservation measures (viz. check dams/anicuts) adopted? Any other methods attributed to climate change adaptation/mitigation/ carbon sequestration, (eg. prevention of forest fires etc.) adopted?

***Score: Poor: 2.5; Fair: 5; Good: 7.5; Very Good: 10**

3. INPUT

3.1 Are personnel adequate, well organized and deployed with access to adequate resources in the Tiger Reserve (TR)*?

Assessment Criteria

Condition	Category*	(Tick ✓)	Reference document(s)	Remarks
Few, personnel explicitly allocated but poorly supported for TR management.	Poor			
Some personnel explicitly allocated for TR management but not adequately supported and systematically linked to management objectives.	Fair			
Some personnel with fair support explicitly allocated towards achievement of specific TR management objectives.	Good			
Adequate personnel appropriately supported and explicitly allocated towards achievement of specific TR management objectives.	Very good			

+This assessment should inter-alia be based on number of personnel allocated for attainment of TR objectives at the Range , Round, Beat and Patrolling camps levels or as relevant to the needs (sanctioned posts vis- a- vis existing personnel and needs beyond the sanctioned strengths. It is possible that posts have last been sanctioned several years back that do not now account for the current needs)."Are staff welfare schemes in place such as insurance policies, distribution of ration, uniforms (Winter and summer sets), providing with gadgets/equipment, camp conditions etc.?"Area per beat guard to be considered to assess deployment of staff rationally; registration e-shram portal and Ayushman Yojna extended to all casual workers?

*Score: Poor: 2.5; Fair: 5; Good: 7.5; Very Good: 10



Fire Fighting squad in Tiger Reserve

3.2 Are resources (vehicle, equipment, building etc.) adequate, well organized and managed with desired access?

Assessment Criteria

Condition	Category*	(Tick ✓)	Reference document(s)	Remarks
Few, if any, resources explicitly allocated for TR management.	Poor			
Some resources explicitly allocated for TR management but not systematically linked to management objectives.	Fair			
Some resources explicitly allocated towards achievement of specific TR management objectives.	Good			
Adequate resources explicitly allocated towards achievement of specific TR management objectives.	Very good			

+These form a variety of resources. These may be segregated into immovable (structures) and movable categories and each further may be considered under the essential and desirable categories. It is best to start with what are the minimum needs to attain each objective, what is available and manner of use/deployment. The proportions of the 'essentials' and 'desirables' along the importance gradient of objectives would serve as pointers for score categories. Specific remarks would be vitally important. Availability of Veterinary facilities and related infrastructure such as rescue cages, specialized vans, medical equipment etc. to be taken into account.

***Score: Poor: 2.5; Fair: 5; Good: 7.5; Very Good: 10**



Tiger Enclosure- Kanha Tiger Reserve, Madhya Pradesh

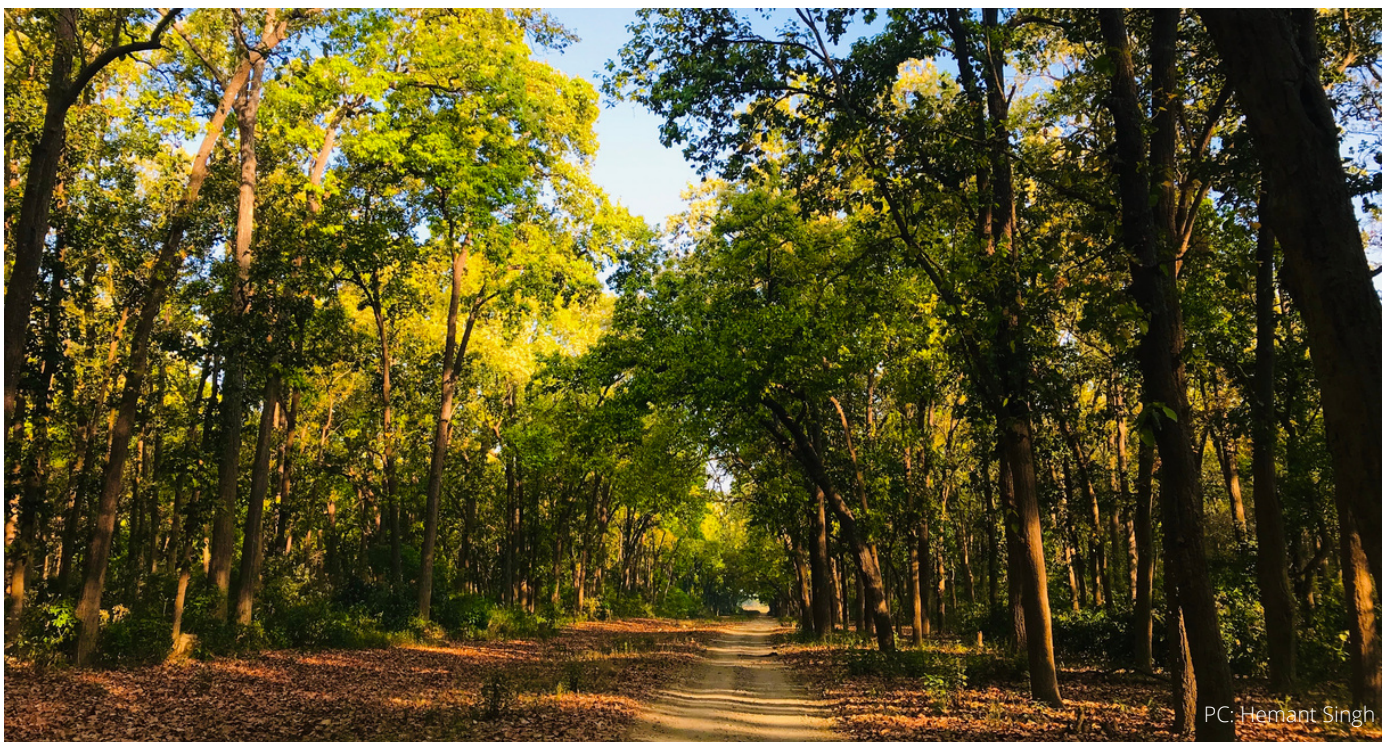
3.3 Are financial resources other than those of the State linked to priority actions and are funds adequate, released timely and utilized?

Assessment Criteria

Condition	Category*	(Tick ✓)	Reference document(s)	Remarks
Resource allocation is adhoc, funds are inadequate and seldom released in time and not utilized.	Poor			
Some specific allocation for management of priority action. Funds are inadequate and there is some delay in release, partially utilized.	Fair			
Comprehensive planning and allocation that meets the most important objectives. Generally funds released with not much delay and mostly utilized.	Good			
Comprehensive planning and allocation of resources for attainment of most objectives. Funds generally released on-time and are fully utilized.	Very good			

+Obtain details of funds released by NTCA and their utilization by TR in the last 3 years and indicate them under 'Remarks'. Also comment on the problems associated with fund allocations and their utilization.

*Score: Poor: 2.5; Fair: 5; Good: 7.5; Very Good: 10



PC: Hemant Singh

Corbett Tiger Reserve, Uttarakhand

3.4 Are financial resources from the State linked to priority action and funds adequate, timely released and utilized for the management of Tiger Reserve?

Assessment Criteria

Condition	Category*	(Tick ✓)	Reference document(s)	Remarks
Resource allocation is adhoc, funds are inadequate and seldom released in time and not utilized.	Poor			
Some specific allocation for management of priority action. Funds are inadequate and there is some delay in release, partially utilized.	Fair			
Comprehensive planning and allocation that meets the most important objectives. Generally funds released with not much delay and mostly utilized.	Good			
Comprehensive planning and allocation of resources for attainment of most objectives. Funds generally released on-time and are fully utilized.	Very good			

+Obtain details of funds released by State and their utilization by TR in the last 3 years and indicate them under 'Remarks'. Also comment on the problems associated with fund allocation and their utilization.

*Score: Poor: 2.5; Fair: 5; Good: 7.5; Very Good: 10

3.5 What level of resources are provided by donors other than government sources?

Assessment Criteria

Condition	Category*	(Tick ✓)	Reference document(s)	Remarks
Donors contribute nothing for the management of the TR.	Poor			
Donors make some contribution to management of the TR but opportunities for collaboration are not systematically explored.	Fair			
Donors contributions are systematically sought and negotiated for the management of some TR level activities.	Good			
Donors contributions are systematically sought and negotiated for the management of many TR level activities.	Very good			

Quantify and compare with last 3 years status; Status of earnings by TCF last 3 years.

*Score: Poor: 2.5; Fair: 5; Good: 7.5; Very Good: 10

4. PROCESS

4.1 Does the TR have manpower resources trained in wildlife conservation for effective TR management?

Assessment Criteria

Condition	Category*	(Tick ✓)	Reference document(s)	Remarks
No trained officers and frontline staff in the TR.	Poor			
Some trained officers and few trained frontline staff, posted in the TR.	Fair			
All trained officers and and fair number of trained frontline staff posted in the TR.	Good			
All trained officers and most of the trained frontline staff is posted in the TR.	Very good			

+Indicate % of trained staff in various categories. The number and thematic areas of the 'Internal Training' programmes organized in the TR in the last 3 years may be taken into account. Has the TR prepared a 'Staff Development Plan'? Is it being implemented?

*Score: Poor: 2.5; Fair: 5; Good: 7.5; Very Good: 10

4.2 Is TR staff management performance linked to achievement of management objectives?

Assessment Criteria

Condition	Category*	(Tick ✓)	Reference document(s)	Remarks
No linkage between staff management performance and management objectives.	Poor			
Some linkage between staff management performance and management objectives, but not consistently or systematically assessed.	Fair			
Management performance for most staff is directly linked to achievement of relevant management objectives.	Good			
Management performance of all staff is directly linked to achievement of relevant management objectives.	Very good			

*Score: Poor: 2.5; Fair: 5; Good: 7.5; Very Good: 10

4.3 Is there effective public participation in TR management+ and does it show in making a difference?

Assessment Criteria

Condition	Category*	(Tick ✓)	Reference document(s)	Remarks
Little or no public participation in TR management.	Poor			
Opportunistic public participation in some of the relevant aspects of TR management.	Fair			
Systematic public participation in most of the relevant aspects of TR management.	Good			
Comprehensive and systematic public participation in all important and relevant aspects of TR management.	Very good			

+The involvement of NGOs/ NGIs in population estimation may be taken into account). Are public awareness and education programme being taken up?

*Score: Poor: 2.5; Fair: 5; Good: 7.5; Very Good: 10

4.4 Is there a responsive system for handling grievances and feedback about TR management?

Assessment Criteria

Condition	Category*	(Tick ✓)	Reference document(s)	Remarks
Ad-hoc approach to handling complaints.	Poor			
Complaints handling system operational but not responsive to individual issues and with limited follow up.	Fair			
Coordinated system logs and responds effectively to most complaints.	Good			
All complaints systematically logged in coordinated system and timely response provided with minimal repeat complaints.	Very good			

+Does the TR maintains 'Suggestions Register/ Box/ Web portal'? What actions are taken to deal with suggestions?

*Score: Poor: 2.5; Fair: 5; Good: 7.5; Very Good: 10

4.5 Does TR management address the livelihood issues of resource dependent communities, especially of women?

Assessment Criteria

Condition	Category*	(Tick✓)	Reference document(s)	Remarks
No livelihood issues are addressed by TR management.	Poor			
Few livelihood issues are addressed by TR management.	Fair			
Substantial livelihood issues are addressed by TR management.	Good			
Livelihood issues of resource dependent communities especially of women are addressed effectively by TR managers.	Very good			

+The number of mandays generated in the last 3 years may be taken into account. Are funds received from District Agencies and other sources? Provide details of funds received in last 3 years. Livelihood options provided through EDCs to local people.

*Score: Poor: 2.5; Fair: 5; Good: 7.5; Very Good: 10

4.6 Has the tiger reserve planned and implemented creation of inviolate zone by means of voluntary village relocation and phasing out of tourism from the core/critical tiger habitat (CTH)?

Assessment Criteria

Condition	Category*	(Tick✓)	Reference document(s)	Remarks
No planning and no implementation	Poor			
Plans have been made but no implementation	Fair			
Plans have been made and some implementation is in progress	Good			
Plans have been made and are being actively implemented/ no human habitation in the CTH	Very good			

+Assessment will look into the voluntary village relocation planning process including availability of manpower, financial resources and NGO support, if any. Is there a mechanism to address the complaints received in respect of relocation process? Effort must be made to assess post- relocation success or otherwise. If the core zone is inviolate, rating will be highest.

*Score: Poor: 2.5; Fair: 5; Good: 7.5; Very Good: 10

5. OUTPUT

5.1 Is adequate information on TR management publicly available?

Assessment Criteria

Condition	Category*	(Tick ✓)	Reference document(s)	Remarks
Little or no information on TR management publicly available.	Poor			
Publicly available information is general and has limited relevance to management accountability and the condition of public assets.	Fair			
Publicly available information provides detailed insight into major management issues and condition of public assets	Good			
Comprehensive reports are routinely available in public domain on management and condition of public assets.	Very good			

Information like TCP, SOPs in vernacular language, MoU, fund flow, estimation, crime, tourism and booking, etc. data can be included.

*Score: Poor: 2.5; Fair: 5; Good: 7.5; Very Good: 10



Tiger Safari

5.2 Are visitor services and facilities appropriate and adequate?

Assessment Criteria

Condition	Category*	(Tick✓)	Reference document(s)	Remarks
Visitor services and facilities do not exist.	Poor			
Visitor services and facilities are very basic.	Fair			
Visitor services and facilities are monitored from time to time and are fairly effective.	Good			
Visitor services and facilities are conscientiously maintained, regularly upgraded and monitored for visitor satisfaction	Very good			

+Include the existence and quality of visitor and interpretation centers, including skills and capabilities of personnel manning these, TR related publications, films, videos; arrangements of stay (including places serving refreshments and food owned and managed by TR), watch towers and hides including safety factors, vehicles assigned for visitors including riding elephants, if any and their deployment, drinking water, rest rooms, garbage disposal, attended and self guided services in the field, visitor feed back on the quality of wilderness experience.

*Score: Poor: 2.5; Fair: 5; Good: 7.5; Very Good: 10

5.3 Are research/ monitoring related trends systematically evaluated and routinely reported and used to improve management?

Assessment Criteria

Condition	Category*	(Tick ✓)	Reference document(s)	Remarks
Little or no systematic evaluation or routine reporting of trends.	Poor			
Some evaluation and reporting undertaken but neither systematic nor routine.	Fair			
Systematic evaluation and routine reporting of trends undertaken.	Good			
Systematic evaluation and comprehensive reporting of trends undertaken and attempts made at course corrections as relevant.	Very good			

+Not all TRs attract projects and researchers and with exceptions, little research takes place on the TRs own steam because of systemic limitations. However, monitoring of some critical issues is expected e.g. population of tiger, co-predators and prey with insights into their demography and distribution (some opportunistic sampling by sightings, signs and spatial distribution during assessment would be extremely useful in terms of expert impression and as a pulse), monitoring incidence of livestock grazing, fires, weeds, sources of water, a variety of illegal activities typically associated with the reserve, wildlife health (e.g. epidemics, immunization of livestock) regeneration and change in vegetation, visitors and their activities, offence cases, ex-gratia payments etc. Efforts must be made to assess the planning and implementation of Phase-IV monitoring protocols and the success of implementation of M-Stripes (wherever applicable). Are the 'Sykes and Horill' monitoring plots maintained and data analyzed? Engagement of interns, collaborations with colleges, Universities or other Institutes for research.

***Score: Poor: 2.5; Fair: 5; Good: 7.5; Very Good: 10**

5.4 Is there a systematic maintenance schedule and funds in place for management of infrastructure/assets?

Assessment Criteria

Condition	Category*	(Tick✓)	Reference document(s)	Remarks
No systematic inventory or maintenance schedule.	Poor			
Inventory maintenance is adhoc and so is the maintenance schedule.	Fair			
Systematic inventory provides the basis for maintenance schedule but funds are inadequate.	Good			
Systematic inventory provides the basis for maintenance schedule and adequate funds are made available.	Very good			

Assests register (buildings & roads) maintained?

***Score: Poor: 2.5; Fair: 5; Good: 7.5; Very Good: 10**



Anti-poaching camp-Mudumalai Tiger Reserve, Tamil Nadu

6. OUTCOMES

6.1 Are populations of threatened species declining, stable or increasing?

Assessment Criteria

Condition	Category*	(Tick ✓)	Reference document(s)	Remarks
Populations of key threatened/ endangered species are declining.	Poor			
Some threatened/ endangered species populations declining, some are increasing, most others are stable.	Fair			
Several threatened/ endangered species populations increasing, most others are stable.	Good			
All threatened/ endangered species populations either increasing or stable.	Very good			

+This needs to practically relate to the natural ecosystem potential rather than being driven merely by numbers and visibility. The assessment score may be elaborated under remarks.

*Score: Poor: 2.5; Fair: 5; Good: 7.5; Very Good: 10

6.2 Is the population of tigers showing a declining, stable or increasing trend?

Assessment Criteria

Condition	Category*	(Tick✓)	Reference document(s)	Remarks
Population of tiger is showing a declining trend.	Poor			
Population of tiger is showing a declining trend and the reason is identified and options to reverse are in place	Fair			
Population of tiger is showing a stable trend but below carrying capacity.	Good			
Population of tiger is stable at carrying capacity or showing an increasing trend and surrounding landscape, core area addresses tiger dispersal appropriately.	Very good			

+This assessment should be based in the context of available population estimate (2010-11) as baseline and the outcomes of the currently ongoing Phase-IV analyses.

*Score: Poor: 2.5; Fair: 5; Good: 7.5; Very Good: 10

6.3 Have the threats+ to the TR being reduced/ minimized? Or is there an increase?

Assessment Criteria

Condition	Category*	(Tick ✓)	Reference document(s)	Remarks
Threats to the TR have not abated but have enhanced.	Poor			
Some threats to the TR have abated, others continue their presence	Fair			
Most threats to the TR have abated. The few remaining are vigorously being addressed.	Good			
All threats to the TR have been effectively contained and an efficient system is in place to deal with any emerging situation.	Very good			

+Does the TR has a Disaster Risk Management Plan to deal with existing as well as emerging threats? Fire management Plan?

*Score: Poor: 2.5; Fair: 5; Good: 7.5; Very Good: 10

6.4 Are the expectations of visitors+ generally met or exceeded?

Assessment Criteria

Condition	Category*	(Tick ✓)	Reference document(s)	Remarks
Expectations of visitors generally not met.	Poor			
Expectations of many visitors are met.	Fair			
Expectations of most visitors are met.	Good			
Expectations of all most all visitors are met.	Very good			

+What is the compliance status on Supreme Court/ NTCA Guidelines on Ecotourism in TRs? Is there any mechanism to take feedbacks from the tourists visiting the park? Are good feedbacks being incorporated by TRs?

*Score: Poor: 2.5; Fair: 5; Good: 7.5; Very Good: 10

6.5 Are local communities supportive of TR management?

Assessment Criteria

Condition	Category*	(Tick ✓)	Reference document(s)	Remarks
Local communities are hostile.	Poor			
Some are supportive.	Fair			
Most locals are supportive of TR management.	Good			
All local communities supportive of TR management.	Very good			

+There could be many reasons for disenchantment. It could be real because of managerial neglect or the managerial efforts could be appropriate but there could be local elements/organizations who would like to keep the disaffection simmering for their own ulterior motives. Likewise success could be entirely because of the efforts of managers or they might be fortunate in striking partnerships with credible NGOs. Assessment may take the prevailing causes into account. Social surveys can be looked into to validate the point. What are we doing to engage?

*Score: Poor: 2.5; Fair: 5; Good: 7.5; Very Good: 10



Habitat Management by local communities

7. MEE SCORE*

Framework Element Number	Framework Element Name	Number of Criteria (a)	Maximum Mark per question (b)	Total (a x b)	Marks obtained for the Element	Overall MEE Score and % age
1	Context	05	10	50		
2	Planning	08	10	80		
3	Inputs	05	10	50		
4	Process	06	10	60		
5	Outputs	04	10	40		
6	Outcomes	05	10	50		
	TOTAL	33		330		

+Efforts will be made by the NTCA-WII-MEE Team to address the issue of assigning ‘differential’ weightages to the 30 Assessment Criteria including ‘normalization’.

8. REFERENCES

Fiona Leverington, Marc Hockings and Katia Lemos Costa, 2008. Management effectiveness evaluation in protected areas: Report for the project ‘Global study into management effectiveness evaluation of protected areas’, The University of Queensland, Gatton, IUCN WCPA, TNC, WWF, AUSTRALIA.

Marc Hockings, Robyn James, Sue Stolton, Nigel Dudley, Vinod Mathur, John Makombo, Jose Courrau, Jeffrey Parrish and Marc Patry, 2008. Enhancing Our Heritage Toolkit: Assessing Management Effectiveness of Natural World Heritage Sites. World Heritage Paper 23. UNESCO World Heritage Centre, Paris.

Mathur, V.B. 2008. Management Effectiveness Evaluation (MEE) of Protected Areas Network in India: Recent Experiences. Secretariat of the Convention on Biological Diversity (2008). Implementation of the CBD Programme of Work on Protected Areas: Progress and Perspectives. Abstracts of Poster Presentations at the Second Meeting of the Ad Hoc Open-ended Working Group on Protected Areas, 11–15 February, 2008 in Rome, Italy Technical Series no. 35, 106 pages.

Mathur, V.B., R. Gopal, S.P. Yadav and P.R. Sinha 2011. Management Effectiveness Evaluation (MEE) of Tiger Reserves in India: Process and Outcomes. National Tiger Conservation Authority, Government of India, p 97 <http://projecttiger.nic.in> and http://wiienvis.nic.in/userlogin.aspx?Page=MEE%20TR%20Report_2011.pdf&file=pdf.

Landscape Clusters for Independent Management Effectiveness Evaluation of Tiger Reserves

S. No.	Cluster	Name of Tiger Reserve	State	Name of the Landscape
1.	Cluster-I (10 Nos.)	<u>Dudhwa</u>	Uttar Pradesh	SG
2.		<u>Pilibhit</u>	Uttar Pradesh	SG
3.		<u>Corbett</u>	<u>Uttarakhand</u>	SG
4.		<u>Rajaji</u>	<u>Uttarakhand</u>	SG
5.		<u>Melghat</u>	Maharashtra	CI & EG
6.		<u>Pench</u>	Maharashtra	CI & EG
7.		<u>Tadoba-Andhari</u>	Maharashtra	CI & EG
8.		<u>Sahyadri</u>	Maharashtra	CI & EG
9.		<u>Navegaon-Nazira</u>	Maharashtra	CI & EG
10.		<u>Bor</u>	Maharashtra	CI & EG
11.	Cluster -II (9 Nos.)	<u>Bandhavgarh</u>	Madhya Pradesh	CI & EG
12.		<u>Satpura</u>	Madhya Pradesh	CI & EG
13.		<u>Kanha</u>	Madhya Pradesh	CI & EG
14.		<u>Panna</u>	Madhya Pradesh	CI & EG
15.		<u>Pench</u>	Madhya Pradesh	CI & EG
16.		<u>Sanjay -Dubri</u>	Madhya Pradesh	CI & EG
17.		<u>Ranthambhore</u>	Rajasthan	CI & EG
18.		<u>Sariska</u>	Rajasthan	CI & EG
19.		<u>Mukundara Hills</u>	Rajasthan	CI & EG
20.	Cluster -III (10 Nos.)	<u>Valmiki</u>	Bihar	SG
21.		<u>Indravati</u>	<u>Chhattishgarh</u>	CI & EG
22.		<u>Achanakmar</u>	<u>Chhattishgarh</u>	CI & EG
23.		<u>Udanti-Sitanadi</u>	<u>Chhattishgarh</u>	CI & EG
24.		<u>Simlipal</u>	Odisha	CI & EG
25.		<u>Satkosia</u>	Odisha	CI & EG
26.		<u>NSTR</u>	Andhra Pradesh	CI & EG
27.		<u>Kawal</u>	Telangana	CI & EG
28.		<u>Amrabad</u>	Telangana	CI & EG
29.		<u>Palamau</u>	Jharkhand	CI & EG
30.	Cluster -IV (11 Nos.)	<u>Bandipur</u>	Karnataka	WG
31.		<u>Nagarhole</u>	Karnataka	WG
32.		<u>Bhadra</u>	Karnataka	WG
33.		<u>Dandeli-Anshi</u>	Karnataka	WG
34.		<u>Biligiri Ranganatha Swamy Temple</u>	Karnataka	WG
35.		<u>Periyar</u>	Kerala	WG
36.		<u>Parambikulam</u>	Kerala	WG
37.		<u>Kalakad-Mundanthurai</u>	Tamil Nadu	WG
38.		<u>Annamalai</u>	Tamil Nadu	WG
39.		<u>Mudumalai</u>	Tamil Nadu	WG
40.		<u>Sathyamanglam</u>	Tamil Nadu	WG
41.	<u>Srivilliputhur Megamalai</u>	Tamil Nadu	WG	
42.	Cluster -V (10 Nos.)	<u>Namdapha</u>	Arunachal Pradesh	NE & BF
43.		<u>Pakke</u>	Arunachal Pradesh	NE & BF
44.		<u>Kamlang</u>	Arunachal Pradesh	NE & BF
45.		<u>Kaziranga</u>	Assam	NE & BF
46.		<u>Manas</u>	Assam	NE & BF
47.		<u>Nameri</u>	Assam	NE & BF
48.		<u>Oranga</u>	Assam	NE & BF
49.		<u>Dampa</u>	Mizoram	NE & BF
50.		<u>Buxa</u>	West Bengal	NE & BF
51.		<u>Sundarbans</u>	West Bengal	NE & BF

SG : Shivalik- Gangetic Plain Landscape Complex

CI & EG : Central Indian Landscape Complex and Eastern Ghats Landscape Complex

WG : Western Ghats Landscape Complex

NE & BF : North East Hills & Brahmaputra Flood Plains and Sundarbans Landscape Complex





National Tiger Conservation Authority
B1 Wing, 7th Floor, Pt. Deendayal Antyodaya
Bhawan, CGO Complex, Lodhi Road,
New Delhi-110003
website: ntca.gov.in
twitter: [@ntca_india](https://twitter.com/ntca_india)