

Another's pain in my social brain: How does placebo analgesia affect decisions to exert effort to reduce another's pain?

Helena Hartmann, Paul Forbes, Markus Rütgen, & Claus Lamm

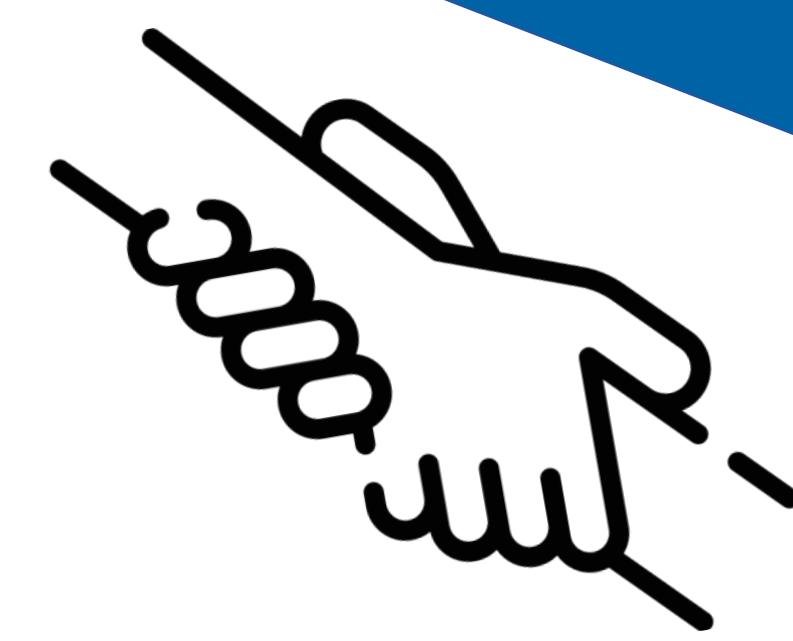
Social, Cognitive and Affective Neuroscience (SCAN) Unit
Department of Cognition, Emotion, and Methods in Psychology
Faculty of Psychology, University of Vienna



Introduction

- First-hand experience and empathy for pain rely on similar neural functions: shared representations account¹
- Placebo analgesia reduces both one's own pain as well as empathy for pain²⁻⁴

- Empathy is positively correlated with prosocial behavior⁵
- Previous studies were mainly correlational and used trait measures or donation behavior⁶
- In everyday life, spontaneous prosocial acts require actual effort exerted in that exact moment in time⁷

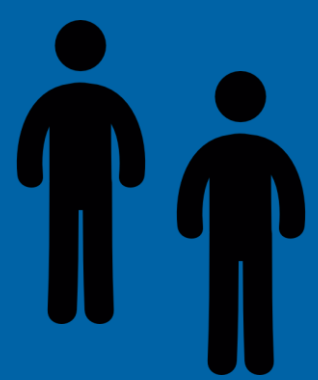


Research Question

Does placebo analgesia affect decisions to exert physical effort to reduce another's pain?



Methods



Sample

- N = 90 (45 per group, 24 females each, mean age = 23.7 ± 3.6 years)
- No group differences in trait empathy, prosocial behavior or clinical impairments
- No doubts about study setup or confederate



Individual pain and effort calibrations

Anonymous role assignment of participant and confederate: „Decider“ and „Receiver“ of pain



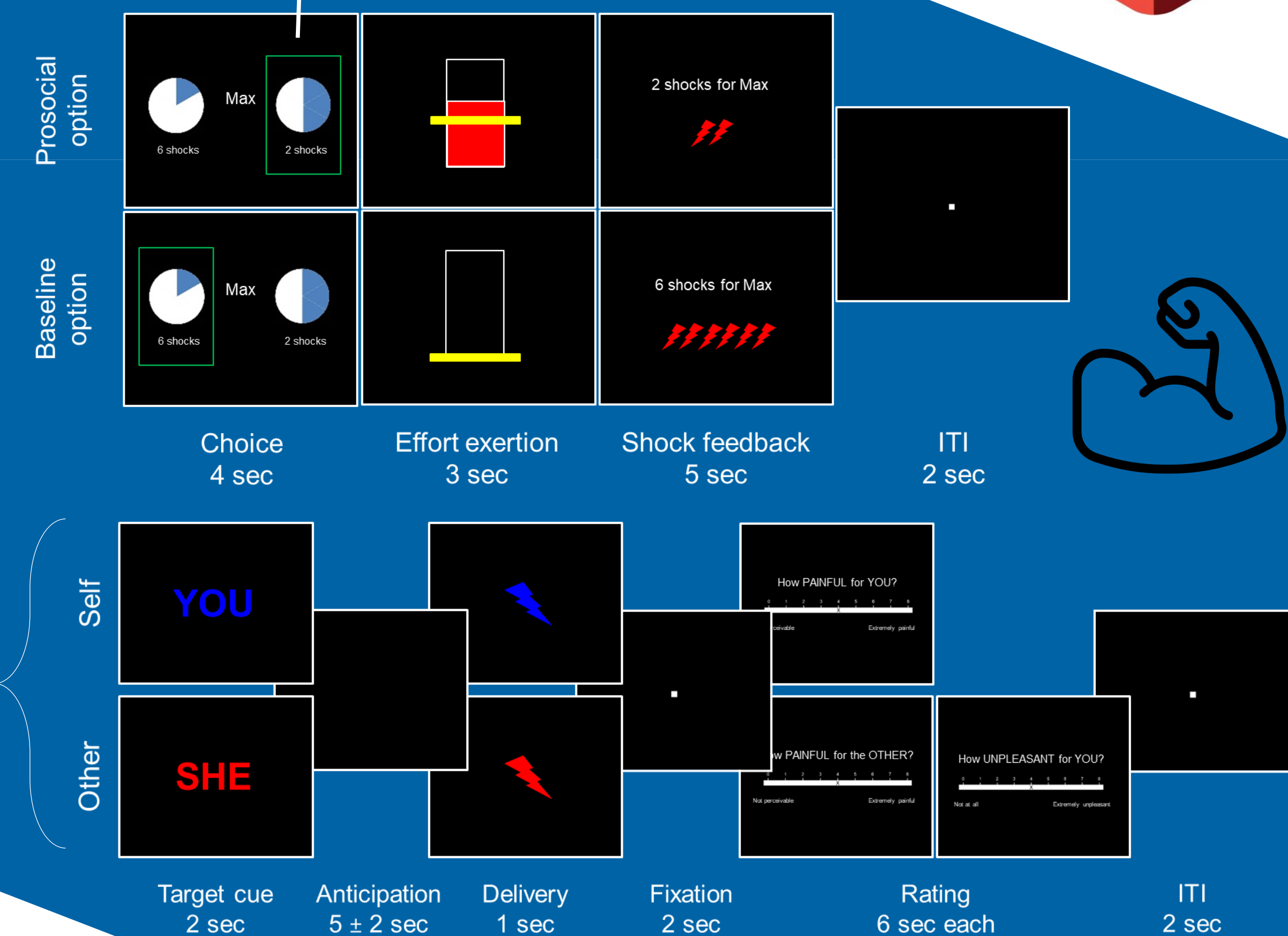
Group 1
Placebo induction („analgetic“ pill + conditioning procedure)

Placebo analgesia induction

Group 2
Control (no pill + equal waiting time)

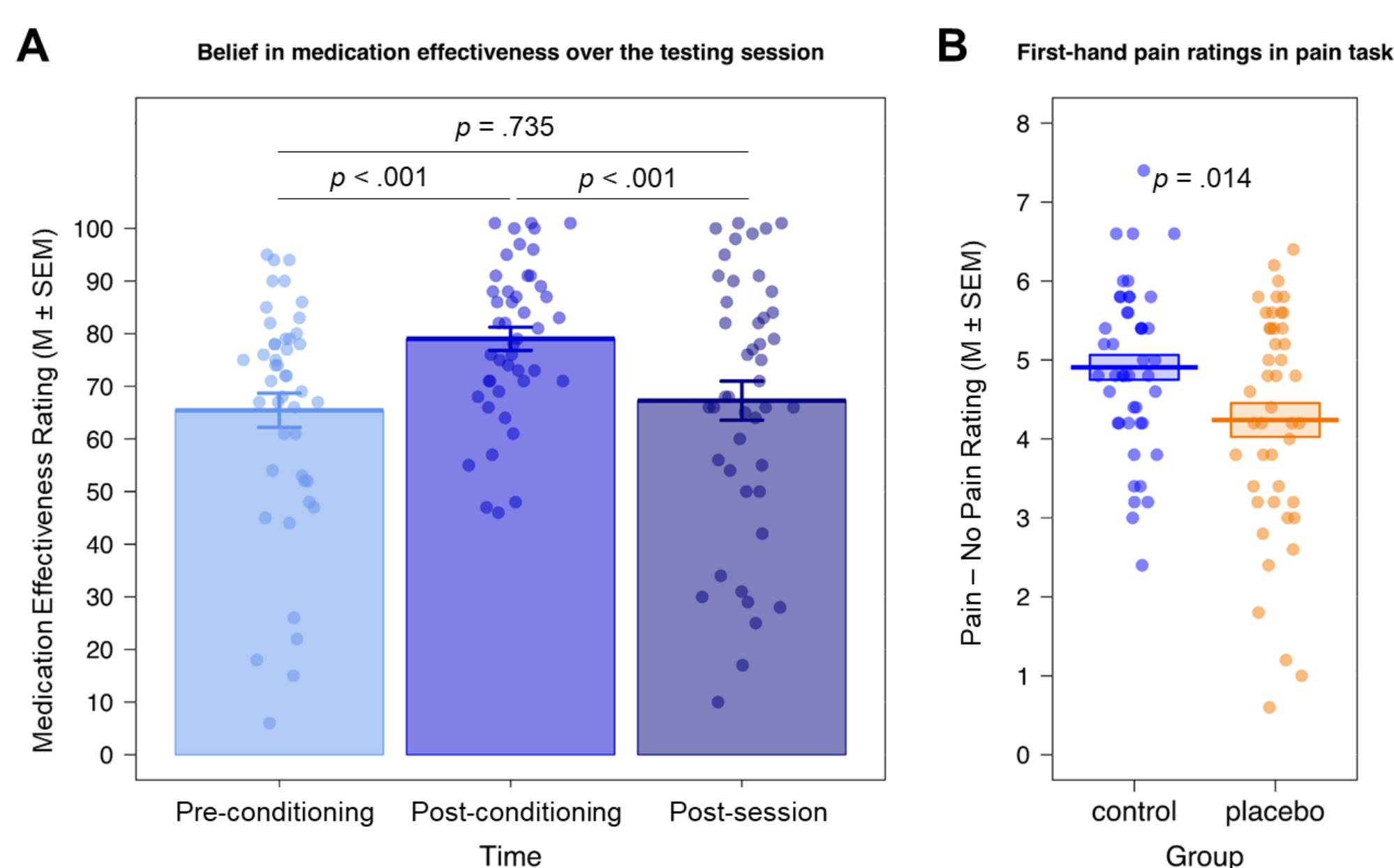
Prosocial effort task

5 effort levels (30, 40, 50, 60 or 70% of MVC) x 5 shock levels (1, 2, 3, 4 or 5 shocks to other) x 3 blocks = 75 trials

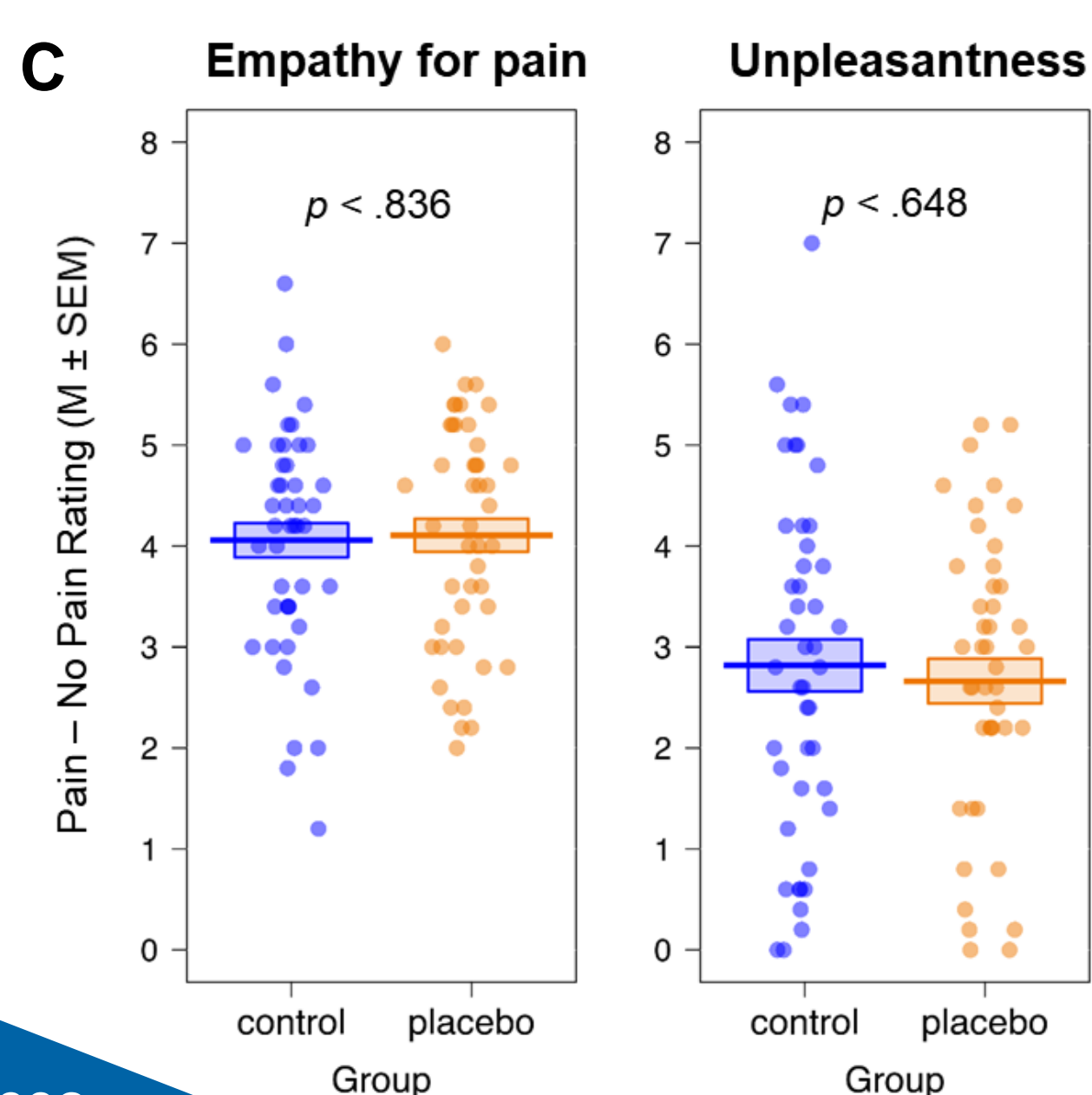


Results

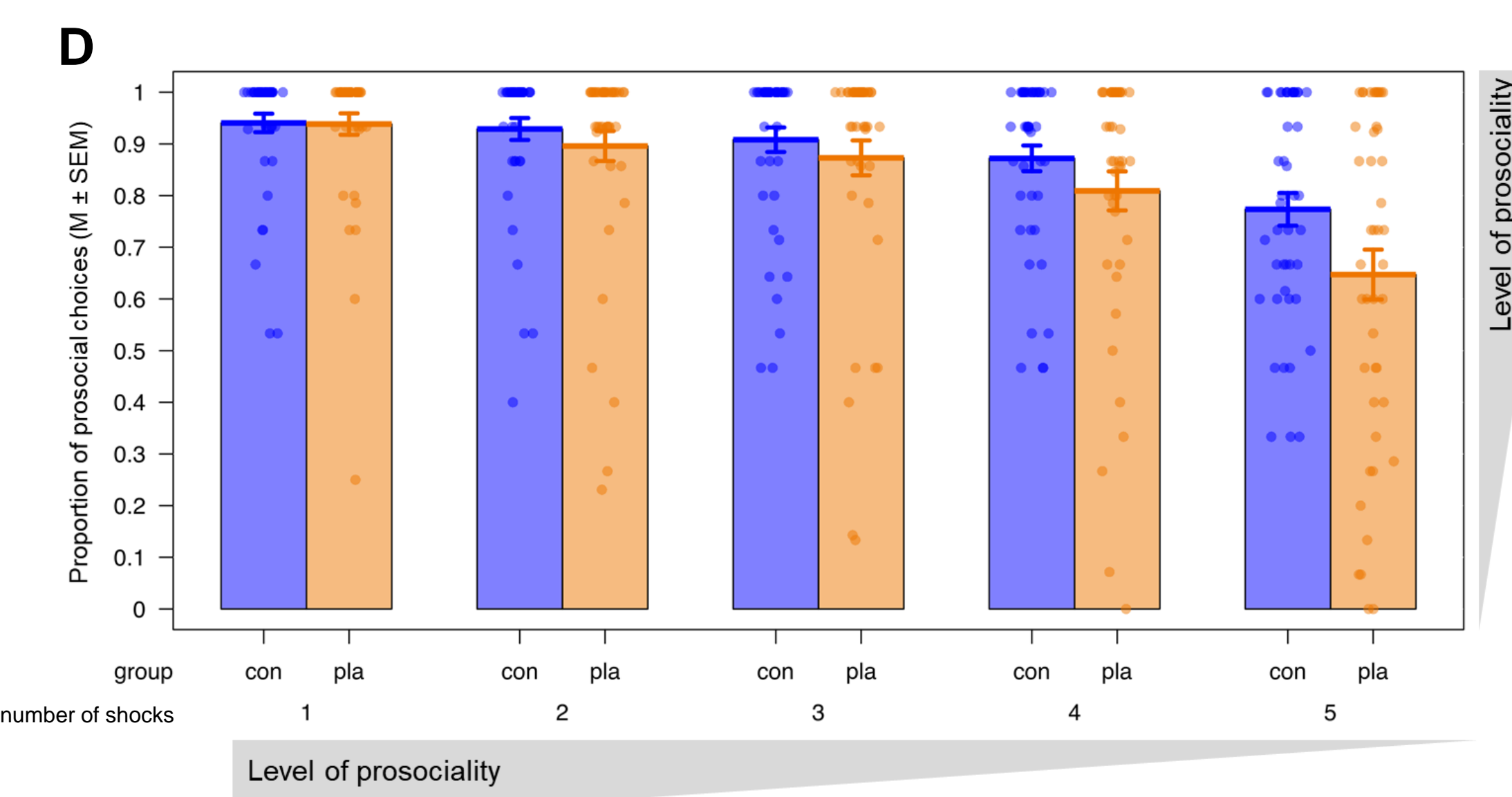
Significant first-hand placebo analgesia effect



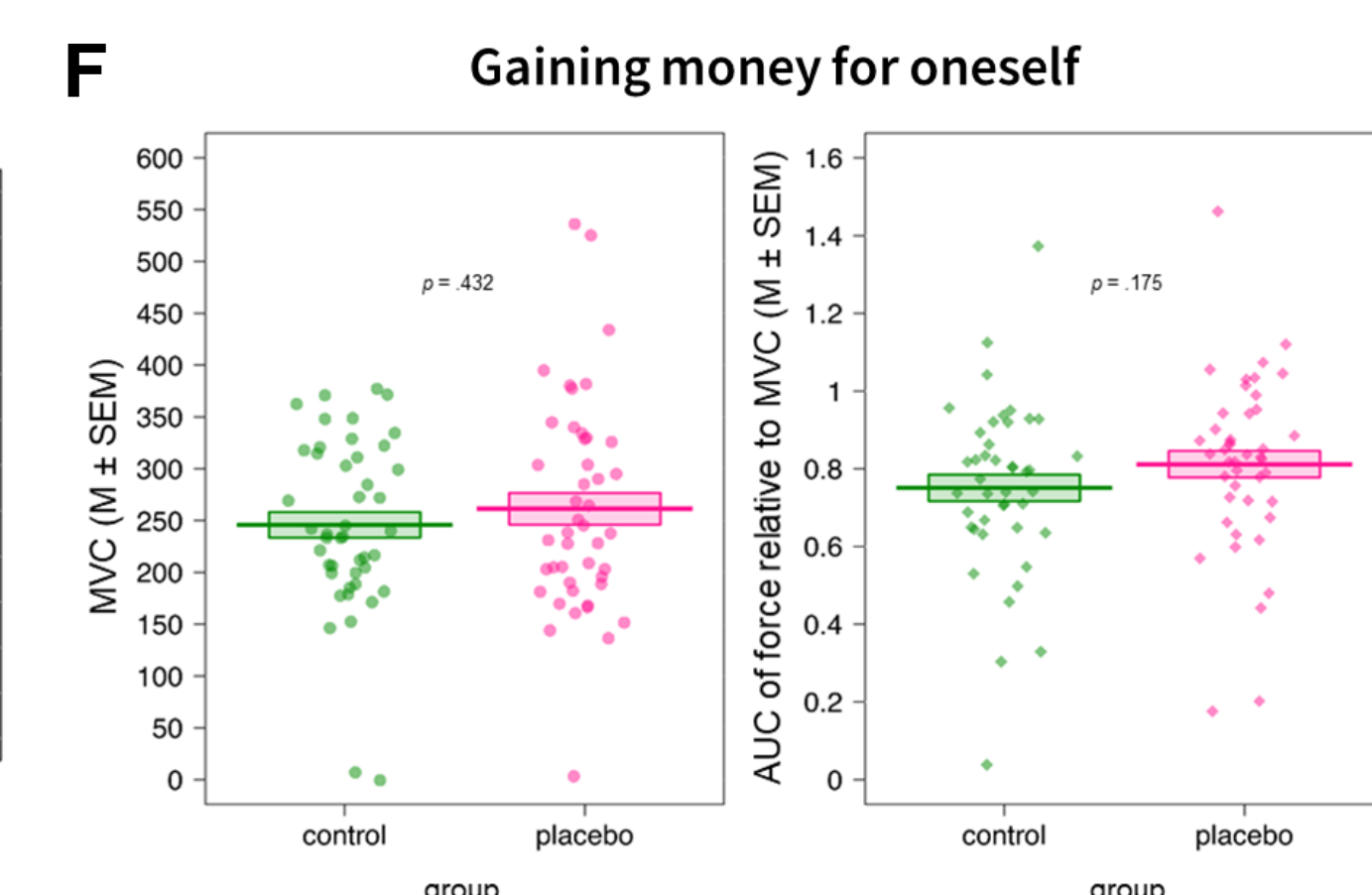
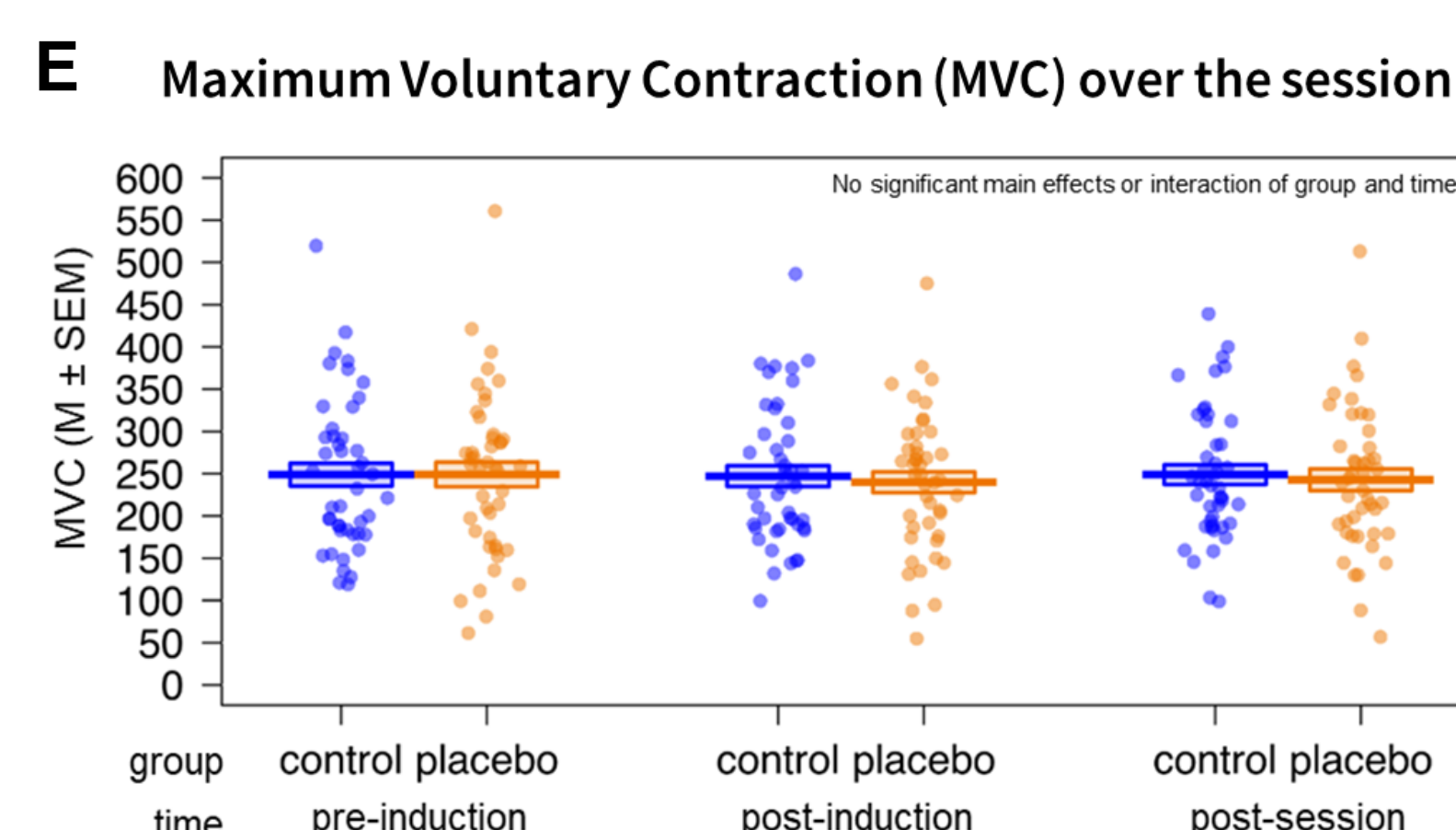
No transfer of placebo effect to empathy for pain



Placebo group displays reduced prosocial behavior when being able to help less



No effect of placebo on general motivation to exert effort or to gain money for oneself



Conclusion

Specific effects of placebo analgesia on prosocial decisions dependent on the level of possible helping

First-hand and empathy for pain task

Contact

0000-0002-1331-6683
helena.hartmann@univie.ac.at
@helenahartmann



Vienna Doctoral School
Cognition · Behaviour · Neuroscience



Preregistration:
osf.io/g3acp

References

- Lamm, et al. (2011)
- Rütgen et al. (2015, PNAS)
- Rütgen et al. (2015, JNeurosci)
- Mischkowski et al. (2016)
- Brethel-Haurwitz et al. (2017)
- Crockett et al. (2014)
- Lockwood et al. (2017)

Icons from flaticon.com